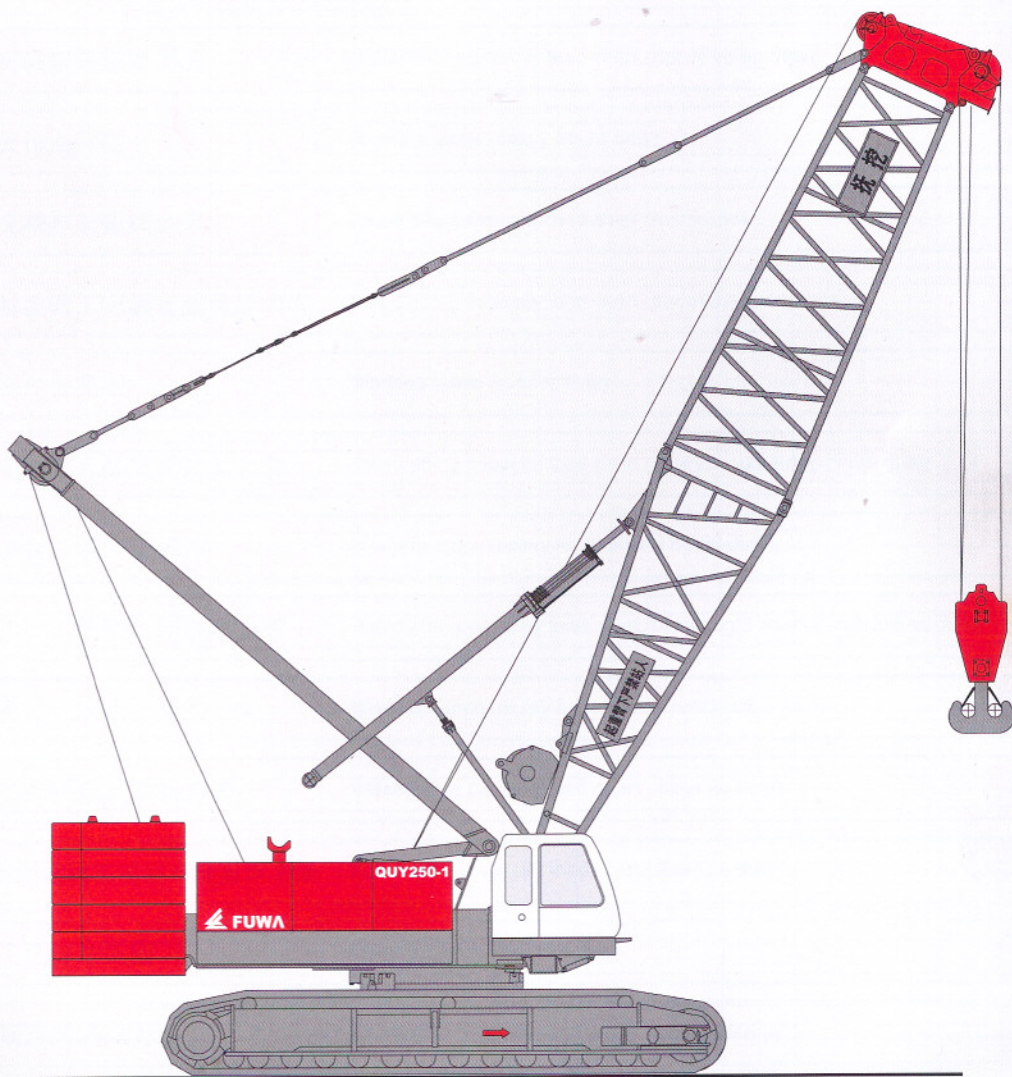
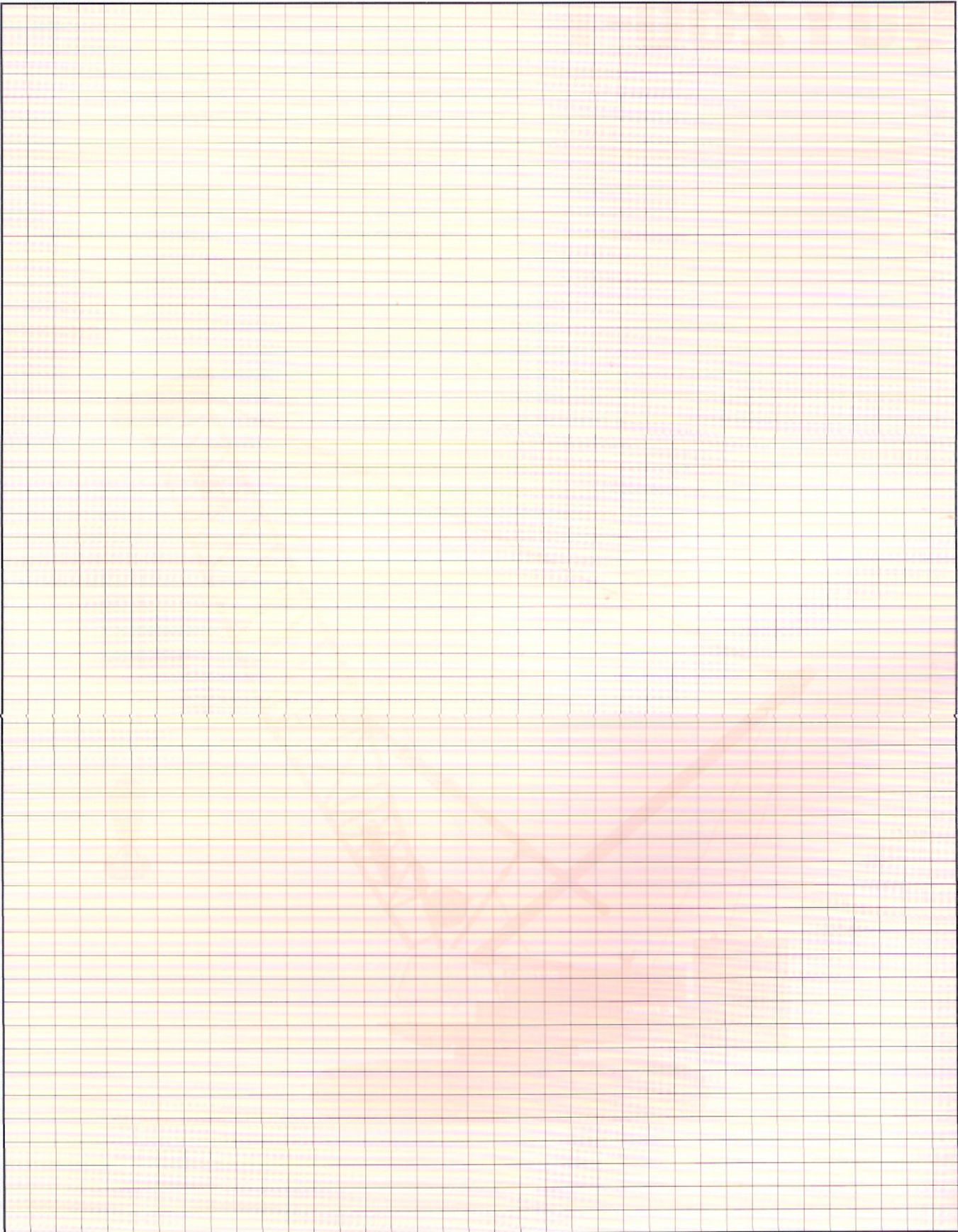


液压式履带起重机

HYDRAULIC CRAWLER CRANE

QUY250-1





目录 Content

安全装置	Safety device	01-02 >>
详细说明	Specifications	03-04 >>
臂杆组合	Boom combination	05-06 >>
主要技术参数	Technical data	07 >>
总体尺寸	Overall dimension	07-09 >>
主臂和副臂结合	Boom and jib combination	10-13 >>
重主臂工况额定起重能力表	Rated lifting capacity load chart (Heavy boom duty)	14 >>
重主臂工况作业范围	Working range (heavy boom duty)	15 >>
辅助臂工况额定起重能力表	Rated lifting capacity load chart (runner duty)	16 >>
带辅助臂时主臂工况额定起重能力表	Rated lifting capacity load chart (boom duty with runner)	17-18 >>
辅助臂工况作业范围	Working range (runner duty)	19 >>
重型加长主臂工况额定起重能力表	Rated lifting capacity load chart (heavy lengthening boom duty)	20 >>
重型加长主臂工况作业范围	Working range (heavy lengthening boom duty)	21 >>
重轻混合主臂工况额定起重能力表	Rated lifting capacity load chart (heavy-light boom combination duty)	22 >>
重轻混合主臂工况作业范围	Working range (heavy-light boom combination duty)	23 >>
固定副臂工况额定起重能力表	Rated lifting capacity load chart (fixed jib duty)	24-28 >>
带固定副臂时主臂工况额定起重能力表	Rated lifting capacity load chart (fixed jib duty)	29-32 >>
固定副臂工况作业范围	Working range (fixed jib duty)	33 >>
塔式工况额定起重能力表	Rated lifting capacity load chart (luffing jib duty)	34-42 >>
额定起重能力表说明	Note for rated lifting capacity load chart	43 >>
塔式工况作业范围	Working range (luffing jib duty)	44 >>
主要零部件运输尺寸	Dimensions of main components for transport	45-49 >>



安全装置

吊钩过卷装置

吊钩和臂架防过卷装置是用于防止因过卷导致的机器损坏或后翻事故。当起重钩提升到一定高度时，将重锤托起，则微动开关由弹簧复位，开关接点断开，控制继电器动作使蜂鸣器报警，报警指示灯闪亮，同时，控制器锁定起重钩的提升，起重钩提升动作自动停止。

臂架防倾装置

臂上限角度由力矩限制器和主臂上限位开关检测控制。

a.起重工况时

当主臂 \geq 上限位角度 80° 时，力矩限制器声光连续报警，并输出信号，主臂停止升臂。同时，主臂上限位开关动作，主臂上限位开关回路被切断，主臂停止升臂。

b.塔式工况时

当塔式主臂 \geq 上限位角度 85° 时，力矩限制器声光连续报警，并输出信号，塔式主臂停止升臂。同时，塔式主臂上限位开关动作，塔式主臂上限位开关回路被切断。塔式主臂停止升臂。当塔臂 \geq 上限位角度 70° 时，力矩限制器声光连续报警，并输出信号，塔臂停止升臂。同时，塔臂上限位开关动作，塔臂上限位开关回路被切断，塔臂停止升臂。

力矩限制器

限制器对起重机作业进行实时监控，在各种工况下，通过按键设置工况参数。

当额定起重力矩的 $0\% \leq$ 起重力矩 $<$ 额定起重力矩的 90% 时，力矩限制器显示屏上，力矩百分比条形码绿色点亮，限制器无声音报警。

当额定起重力矩的 $90\% \leq$ 起重力矩 $<$ 额定起重力矩的 100% 时，力矩限制器显示屏上，力矩百分比条形码黄色预警，同时限制器发出声音断续报警。

当额定起重力矩的 $100\% \leq$ 起重力矩 $<$ 额定起重力矩的 105% 时，力矩限制器显示屏上，力矩百分比条形码红色报警，同时限制器发出声音连续报警。

当起重力矩 \geq 额定起重力矩的 105% 时，力矩限制器显示屏上，力矩百分比条形码红色报警，限制器发出声音连续报警，同时输出信号。主、副钩停止提升，臂停止增幅动作。

制动器及其锁定装置

制动器 本起重机设有主、副卷筒制动器，主、副变幅卷筒制动器，回转制动器。

锁定装置 本起重机设有主、副卷筒棘爪锁定装置、主变幅卷筒棘爪锁定装置、回转锁定装置。

风速仪

臂架顶部的风速传感器装置用于检测风速，力矩限制器显示风速。

水平仪

该装置用于检测机体与水平地面的角度，用来保证机器工作地面符合要求。

角度盘

主臂架根处设有机械式角度盘，用来显示臂架当前角度。

卷筒过放保护(三圈半保护)

主卷、副卷筒分别安装有三圈半保护装置，用来避免卷筒放绳时产生过放现象。

油缸伸缩带弹簧防倾杆

主要用于防倾杆碰撞。

防倾杆限位保护

设有防倾杆限位开关。

行走报警

行走时，机器发出蜂鸣器报警。

回转报警

回转时，机器发出蜂鸣器报警。

吊钩防脱绳装置

防止吊重钢绳从吊钩中脱落。

臂架变幅接近极限位置减速控制

臂架变幅接近极限位置时进行减速控制，从而使臂架避免突然急停，造成大的冲击。

扬声器(司机用)

司机和作业指挥者相互提示、同时也提醒周围作业者。

显示屏显示柴油机的各种参数

1. 柴油机工作累记小时
2. 风速
3. 柴油机转速
4. 机油油温
6. 机油压力
7. 冷却水温
8. 燃油液位
9. 水平倾角
10. 液压油温

卷扬监视器

时时掌握主、副卷筒及变幅卷筒钢丝绳运行状态。

后视镜

司机室的前右侧装有反射镜，观察机器后面是否存在障碍物及安全隐患。

雨刷器

用于清除司机室前窗的雨滴、尘埃，以保证操作者具有良好的视野。

高空太阳能警示灯

该灯为航空警示灯，太阳能式无须其它能源。

负载率指示灯

为了便于现场人员了解机械载荷情况，采用了与交通信号相同的3色负载率指示灯。

Safety Device

Hook overwinch device	<p>Hook and boom over-hoist prevention devices are used for preventing the crane from the accidents because of over-hoist.</p> <p>When the hook lifts up to certain height and touches the plumb, the limit switch shall be disengaged by the reposition spring, and then the switch cuts off the control circuit. The control relay makes the buzzer alarm and the indicator lights up. At the same time, the rise of the hook will stop automatically.</p>
Boom backstop device	<p>The boom upper limit angle is controlled by moment limiter and boom upper limit switch.</p> <p>a. Working condition with boom When the boom upper limit angle is more than 80°, the moment limiter will continuously alarm and send out the signal. The rise of boom will stop. At the same time, the limit switch is cut off. The boom stops rising.</p> <p>b. Working condition with luffing jib When luffing boom upper limit angle is more than 85°, the moment limiter will continuously alarm and send out the signal of danger. The rise of luffing boom will stop. At the same time, the limit switch is cut off. The luffing boom stops rising.</p> <p>When luffing jib upper limit angle is more than 70°, the moment limiter will alarm continuously and send out the signal of danger. The rise of the luffing jib stops. At the same time, the limit switch on the luffing jib is cut off. The luffing jib stops rising.</p>
Moment limiter	<p>The device monitors the work of the crane. You can press the key to set the values of all working conditions.</p> <p>When the actual load is less than 90% of rated load, the screen shows load proportional bar in green color, and no warning alarm from the Safe Load Indicator.</p> <p>When the actual load exceeds 90% of rated load while is less than 100% of rated load, the screen shows yellow color and an intermittent warning alarm sounds.</p> <p>When the actual load exceeds 100% of rated load while less than 105% of rated load, the monitor screen shows red color and the Safe Load Indicator gives continuous warning alarm, and output control signal.</p> <p>When the actual load exceeds 105% of rated load, the monitor screen shows red color and gives out a continuous warning alarm, at the same time the Safe Load Indicator put out control signal (CANOPEN2.OB) to stop the hoisting action of main and auxiliary hooks and boom.</p>
Brake and locking device	<p>Brakes: main and auxiliary winch brakes, main and auxiliary derricking drum brakes and slew brake.</p> <p>Locking devices: main and auxiliary winch pawls, main derricking drum pawls and slew locking device.</p>
Anemometer	Anemometer- the wind speed sensor is installed on the top of boom to test the wind speed. The moment limiter displays wind speed.
Level gauge	The device is used for testing the angle between the machine and the ground.
Angle Scale	The angle scale on the boom foot shows the current angle of the boom.
Rope retainer (three and a half circles retained on the drum)	This device is installed on the main and auxiliary hoisting winches to ensure at least three and a half circles of wire ropes be kept on the winch to guarantee safe operation of the machine.
Telescopic cylinder with spring backstop	To mainly use for backstop collision
Backstop limit protection	Backstop limit switch attached
Traveling alarm	Buzzer alarms when when traveling
Slewing alarm	Buzzer alarms when slewing
Hook anti-off rope device	To prevent wire rope from disengaging from hook
Boom derricking slowdown control approaching high-point position	Carry through slowdown control when boom derricking approaches to high-point position, which avoid tremendous impact and make boom have an abrupt emergency stop.
Loudspeaker (driver use)	Clue-on should be done for driver and operator including the people nearby as well.
Display various parameter on diesel engine	<ol style="list-style-type: none"> 1. Diesel engine working cumulation hours 2. Windspeed 3. Diesel engine rev 4. Engine oil temperature 5. Engine oil pressure 6. Cooling water temperature 7. Fuel liquid level 8. Horizontal obliquity 9. Hydraulic oil temperature
Winch monitor	To monitor and master main/aux. drum and derricking drum wire rope
Rearview mirror	Reflector is installed at front-right side of cab to view obstacle or unsafe hidden trouble at the back of crane.
Window wiper	To use for cleaning raindrop, dust on the front window to ensure operator have a good view.
Aerial solar caution light	It belongs to aviation caution light and don't need other energy sources except solar energy.
Load rate indicator light	To facilitate in understanding machi load condition for the personnel on the spot, three-colour load rate indicator light similar to traffic signal

Specifications

QUY250-1 hydraulic crawler crane is a new innovation and replacement based on QUY250; this product absorbs advanced technology abroad and inland with the integration of our company's manufacture skill and experience for many years, also QUY250-1 is a bran-new structure product which adopts most advanced electronic-control technology. Its main hydraulic elements are stocked all over the world and sticking point technology guideline has exceeded same-type products imported, several characteristics are specified as follow:

Superstructure

The driving device

Main characteristics :

- (1)Original imported diesel engine from cummins with strong momentum, small noise and little vibration
- (2)Large-capacity oil tank to ensure long and continuous working time.

Model: QSL—9 engine from electronic control Cummins

Types: water-cooling, vertical spurt, with turbocharger actuator

Drainage Capacity: 8.9L

Rated power output: 246kw/2100rpm

Maximum Torque: 1424N.m/1500rpm

Fuel tank capacity: 400L

Hydraulic oil tank capacity: 500L

Hydraulic System:

- (1)Advanced configuration stocked all over the world
- (2)Imported main pump, various control main valve and valve group adopt imported elements.
- (3)Engine adopts variable double-main pump + slewing pump+ oil cylinder pump + cooling pump + oil supply pump and a group of M7-LUDV valves. The function of the pump system is better than that of the valve system with full working range precise control The travel, derricking, slew and winch can work at the same time. The oil cooler independently controls the temperature. The slew system works closely and independently. The winches work independently.

Control System

Main characteristics :

- (1)To adopt International advanced pump-control system, control system is easy and reliable, this system avoids throttle radiation and energy wastage in general valve-control system. Stable and reliable working institution and wide speed adjustment range with precise jiggle capability. Full power matching and high working efficiency.
- (2)The electrical control system and the low speed control system are adjusted by the extreme load. The power output of the hydraulic system may vary with the power output of the engine when lifting the load. The electrical control system of load adjusting makes the engine have the maximum power output and the engine will not switch off within the working range.

Electric monitoring system

Main characteristics :

- (1)PLC computer integration control system optimizes whole crane control and harmonizes every system movement to reach saving energy and reliability.
- (2)The electric monitor has the function of troubleshooting, CAN-BUS, the software of BODAS. The system adopts RC controller from Rexroth with four computers (the engine computer, the computer of main control, the computer of moment limiter and the computer of electric monitor). The logic control of main actions is completed by the computers and hydraulic system.

Main and auxiliary hoist winches

Main characteristics :

- (1)Imported hoist gearbox, hoist motor and balance valve.
- (2)Main/aux. hoist winch device, driven by variable displacement motor through planetary reduction gear
- (3)Adopt wet-disc and normal closed brake.

Main hoist winch device

Main characteristic :

Adopt imported anti-torsion special and strong wire rope.

The drum: diameter of pitch circle ϕ 660mm

The diameter of wire rope: ϕ 28mm

The length of wire rope: 415m

Maximum speed: 136m/min

Auxiliary hoist winch device

Main characteristics:

Adopt imported anti-torsion special and strong wire rope.

The drum: the diameter of pitch circle ϕ 660mm

The diameter of wire rope: ϕ 22mm

The length of wire rope: 320m

Maximum speed: 136m

Boom derricking system

Main characteristics :

- (1)Imported hoist reduction gear, hoist motor and balance valve.
 - (2)Wet-disc and normally closed brake
 - (3)Imported wire rope
- The drum: the diameter of pitch circle ϕ 526mm
The diameter of wire rope: ϕ 22mm
The length of wire rope: 350m

Jib derricking system

Main characteristics :

- (1)Imported hoist reduction gear, hoist motor and balance valve.
 - (2)Wet-disc and normally closed brake
 - (3)Imported wire rope
- The drum: the diameter of pitch circle ϕ 526mm
The diameter of wire rope: ϕ 22mm
The length of wire rope: 250m

Dragrope winch

The diameter of wire rope: ϕ 8.7mm

The length of wire rope: 240m

Slewing system

Main characteristics :

- (1)Imported slewing reduction gear and slewing motor
 - (2)The slewing system can be turned by 360° . The reduction gear drives the teeth.
- Speed: 1.7r/m
Four pins are locked.

The cabin

Main characteristics :

- (1)Gorgeous structure, humanity design
- (2)Comfortable cab, streamline style. The width of the cabin is 1200mm, the cabin can swing and pitch by 20° convenient for transportation
- (3)The front window is inclined and the posts are designed with the cross section with high strength. There are air-conditioner, heater, rear view mirror, wiper, stereos and fire extinguisher in the cabin. The electric monitor and moment limiter with large screen are in the cabin.
- (4)The seat can be adjusted

Lubricating system

Main characteristics :

Apply grease on the movable points, bearings and slewing chassis at intervals, manual lubrication

Counterweight

Main characteristics :

General weight is 88.5t, which is composed of counterweight chassis 16.4t, five left counterweight bodies, each is 6.9t, the right counterweight has five blocks and each is 7t, two auxiliary counterweight and each is 0.92t.

Undercarriage

Main characteristics:

Low frame

Weid the steel plate with high strength into X-structure. The crawler frame is connected with low frame by the driving pin for the convenience of installation and disassembly.

Central ballast

Main characteristics:

two welded blocks installed in front and back of the understructure. The total weight is 24t. Each block is 12t.

Track roller

Main characteristics:

Every side has 14 track rollers. All track rollers are equipped with bushings, seals and lubricating oil.

Undercarriage frame support cylinder

Main characteristics:

the four hydraulic jack-up cylinders are connected with the beam.

Track shoe

Main characteristics:

the left and right crawlers have 120 track shoes. The width of the track shoe is 1200mm. The tension state of track shoe can be adjusted by the hydraulic jack until the adjusting plate has the ideal position.

Pedrail drive

Main characteristics:

The independent hydraulic driving system is within the crawler frame. Every hydraulic driving system has a hydraulic motor. The hydraulic motor and reduction gear in the crawler frame can not exceed the width of the track shoe. Travel speed 0.8/1.2 km/h
Grade ability: 30% (17°)

Working equipments

Main characteristics:

- (1)Imported beam boom section material, with high strength welding structure tube, with good strength and steel and high carrying capacity.
- (2)The derricking device adopts the structure of pendant bar with high strength.
- (3)Heavy boom's lifting capacity is big
- (4)Increase heavy runner duty.

Boom

Main characteristics:

The insert section has the equal cross section. The top and the foot have the variable cross sections. The boom is the lattice structure. The steel pipes are welded together. The standard boom is 15.2~72.2m.

Heavy lengthening boom

Main characteristics:

Boom length from 73.4m - 91.4m, which to be composed of lower section 7.6m, upper section 8.8m, 3m, 6m, 9m and 12m intermediate section.

Heavy-light boom combination

Main characteristics:

Boom length from 75.8m - 90.8m, connecting tapered section 6.7m and connect luffing jib section until 90.8m when heavy boom 58.6m don't change.

Fixed jib composing

Main characteristics:

Two kinds of angle between boom and fixed jib: 10° and 30° Boom and fixed jib combination: the boom is 45.2~69.2m. The fixed jib is 18m~36m.

Luffing jib composing

The luffing boom is 36.2~60.2m

The luffing jib is 22m~61m.

Hook Blocks

250t hook (optional)

200t hook

150t hook

80t hook

35t hook

13.5t hook

工况符号 The symbols of working conditions



重主臂工况
Heavy boom duty



重型加长主臂工况
Heavy lengthening boom duty



辅助臂工况
Runner duty



重轻混合主臂工况
Heavy-light boom combination duty



固定副臂工况
Fixed jib duty



塔式工况
Luffing jib duty



臂杆组合

Boom combination

重主臂工况

最大起重量: 260吨 × 5米

最大臂杆长度: 72.2米

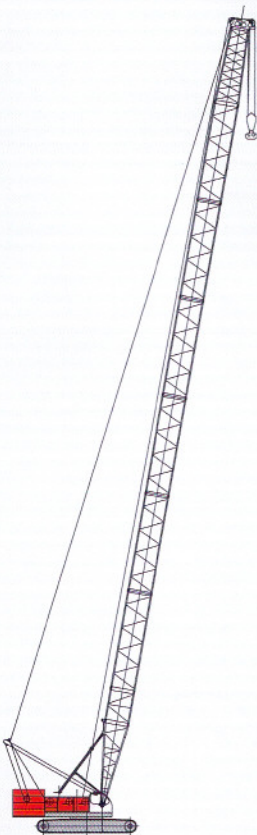
Heavy boom

Max.lifting capacity: 260t × 5m

Max.boom length: 72.2m



主臂 Boom
15.2m-72.2m



辅助臂工况

最大起重量: 25吨 × 30米

最大臂杆长度: 72.2米

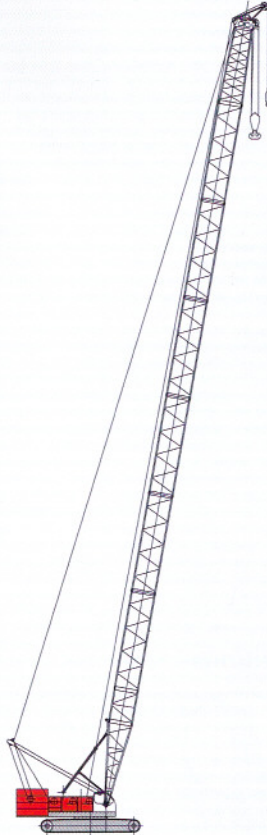
Runner

Max.lifting capacity: 25t × 30m

Max.boom length: 72.2m



主臂 Boom
15.2m-72.2m



重轻混合主臂工况

最大起重量: 31.5吨 × 15米

最大组合: 90.8米

Heavy-light boom combination

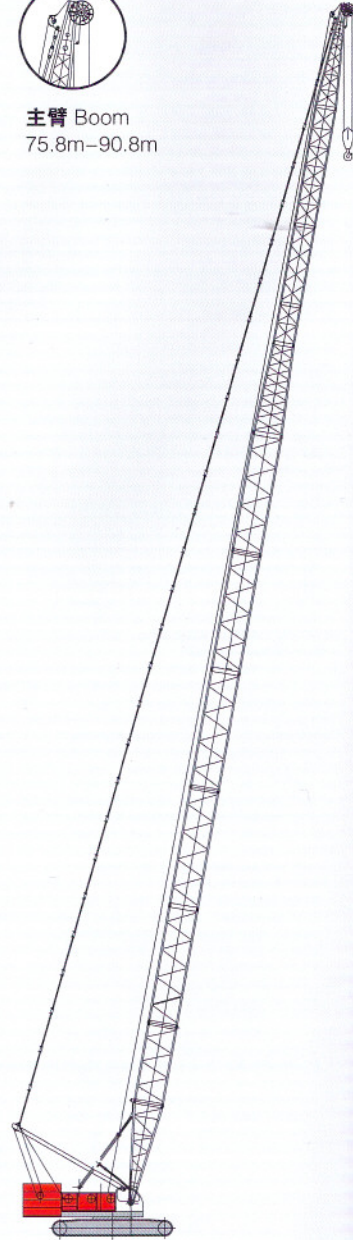
Max.lifting capacity: 31.5t × 15m

Max. boom and jib combination:

90.8m



主臂 Boom
75.8m-90.8m



臂杆组合

Boom combination

06

重型加长主臂工况

最大起重量: 54.9吨 × 14.5米

最大臂杆长度: 91.4米

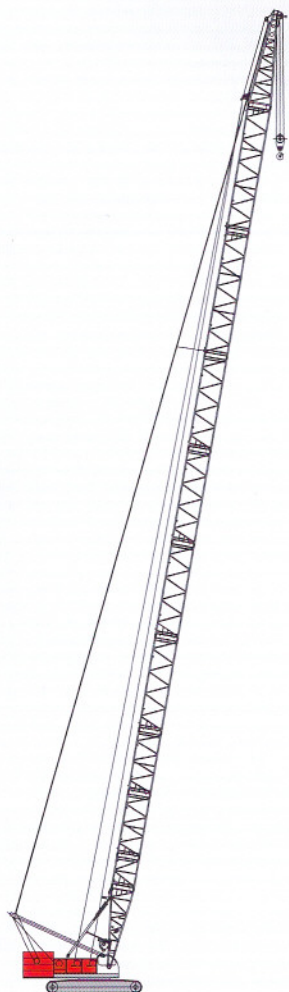
Heavy lengthening boom

Max.lifting capacity: 54.9t × 14.5m

Max.boom length: 91.4m



主臂 Boom
73.4m-91.4m



固定副臂工况

最大起重量: 18.6吨 × 18米

最大臂杆长度: 66.2米+36米

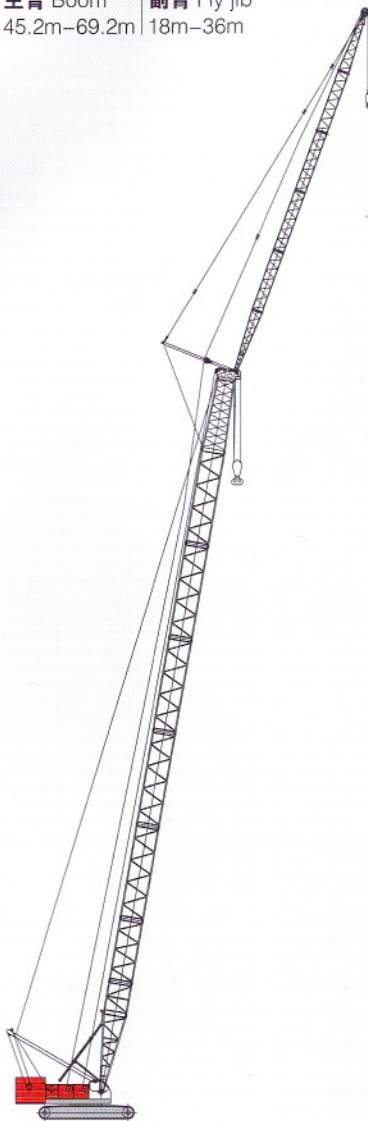
Fixed jib

Max.lifting capacity: 18.6t × 18m

Max.boom length: 66.2m + 36m



主臂 Boom | 副臂 Fly jib
45.2m-69.2m | 18m-36m



塔式工况

最大起重量: 57.8吨 × 14米

最大组合: 60.2米 + 61米

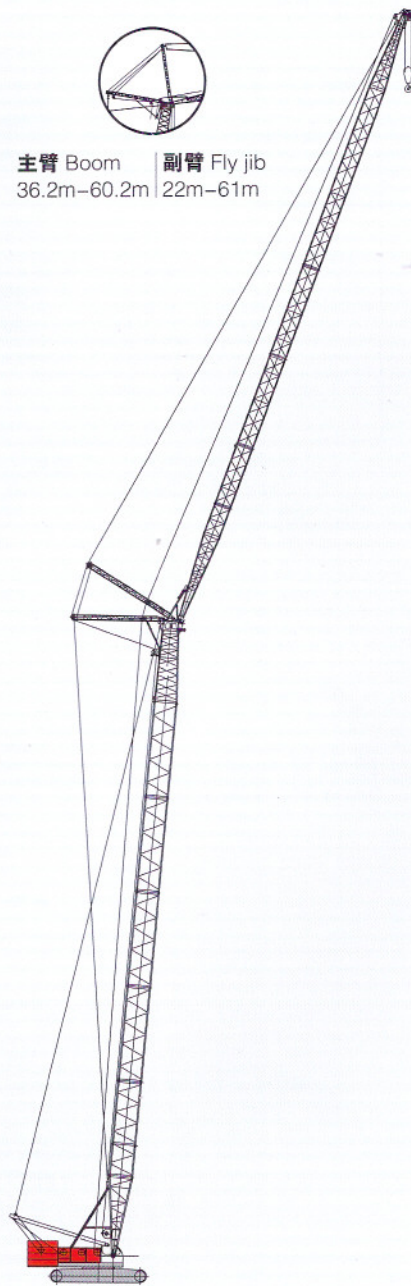
Luffing jib

Max.lifting capacity: 57.8t × 14m

Max. boom and jib combination:
60.2m + 61m



主臂 Boom | 副臂 Fly jib
36.2m-60.2m | 22m-61m





主要技术参数

Technical Data

项目名称		技术参数	
主臂长度 (m)		重主臂: 72.2 重型加长主臂: 91.4 重轻混合主臂: 90.8	
主臂最大额定起重量 (t)		260	
塔臂长度 (m)		22~61	
塔臂起重量 (t)		最大起重量: 57.8 (2~5倍率)	
吊钩配置 (t)		250/200/150/80/35/13.5	
速度	提升 (m/min)	0~136	
	变幅 (m/min)	56	
	回转速度 (r/min)	0~1.7	
	行走速度 (km/h)	(0.8/1.2)	
爬坡能力 (°)	30%	17	
带基本臂自重 (t)	215 (塔式230)	接地比压 (Kg/cm)	1.14~1.36
起重臂变幅角度 (°)	30~80	塔式主臂变幅角度 (°)	65~85
塔式副臂变幅角度 (°)	15~70		
最大起重力矩(t.m)	1300	运输尺寸(mm)(长×宽×高) 12618×3280×3513	
发动机	型号	QSL9 进口康明斯电控柴油机	
	功率 (KW)	246	
	转速 (rpm)	2100	

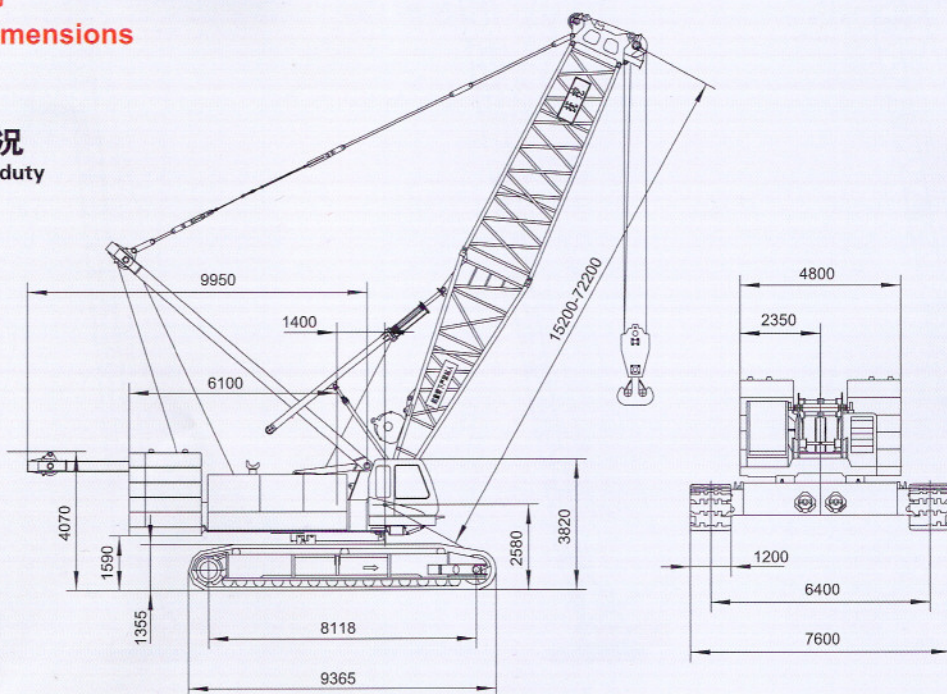
注: (1) 带*速度是随载荷的不同而变化。
(2) 此机可有多种功能供选择。

Descriptions		Data	
Boom Length (m)		Heavy boom:72.2 Heavy duty boom:91.4 Heavy and light boom:90.8	
Boom max. Rated Load Capacity (t)		260	
Length of Luffing Jib (m)		22~61	
Lifting Capacity of Luffing Jib (t)		Max. load 57.8t (with parts of line 2~5)	
Hook Blocks (t)		13.5/35/80/150/200/250	
Speed	Hoist (m/m)	0~136	
	Derricking (m/m)	56	
	Slew (r/m)	0~1.7	
	Travel (km/h)	(0.8/1.2)	
Grade ability (°)	30%	17	
Machine Mass with basic boom (t)	215 (Tower crane:230)	Ground pressure (Kg/cm ²)	1.14~1.36
Boom Angle (°)	30~80	Boom Angle (with Luffing jib) (°)	65~85
Luffing Jib (°)	15~70		
Max. Load Torque (t/m)	1300	Main body dimensions (Length×Width×Height) 12618×3280×3513	
The Engine	Model	QSL9 the engine from Cummins	
	Power Output (KW)	246	
	Rotary Speed (rpm)	2100	

Notes: 1 .The speed with * may vary with the different load.
2 .Multi-functions can be optional for this crane.

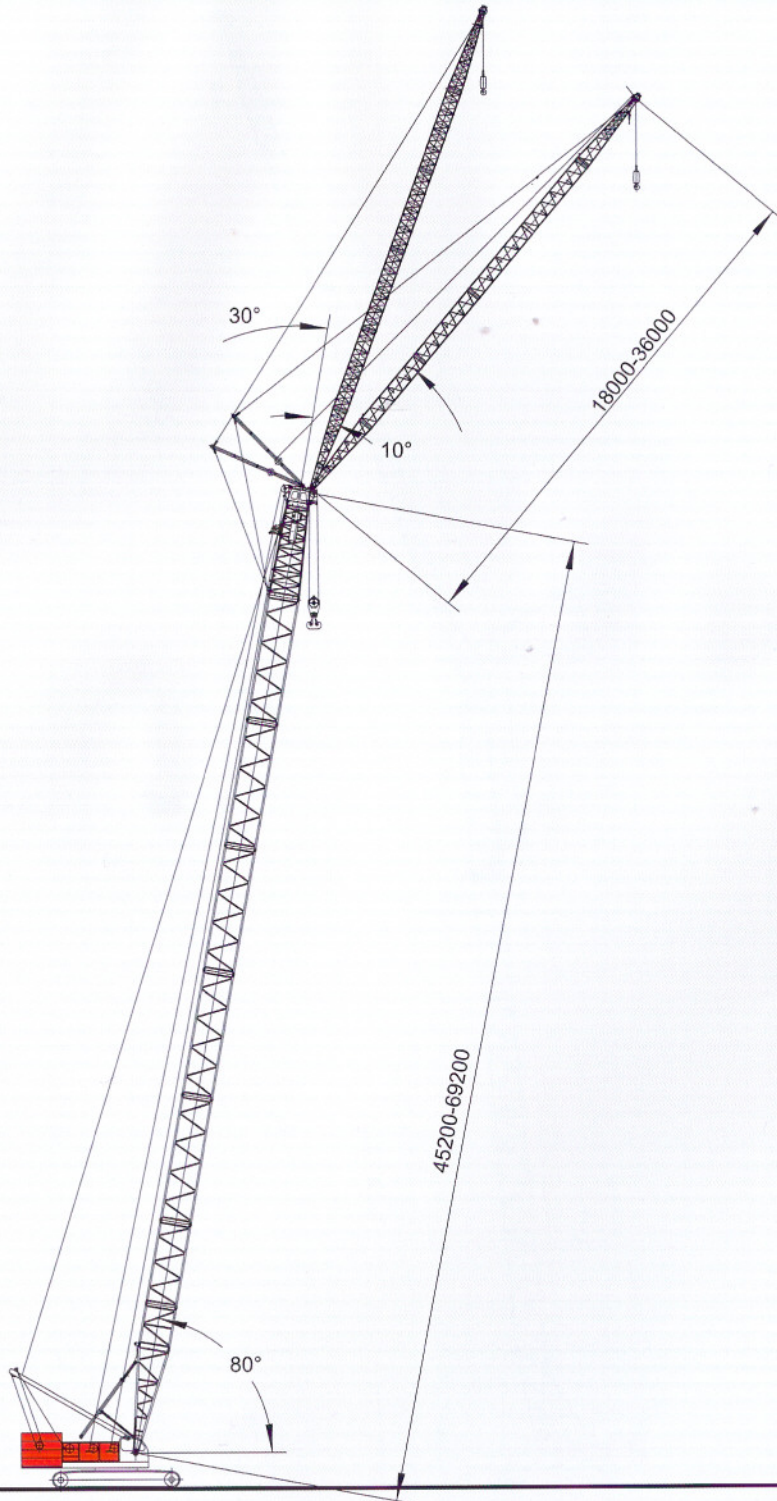
总体尺寸 Overall Dimensions

重主臂工况 Heavy boom duty



总体尺寸

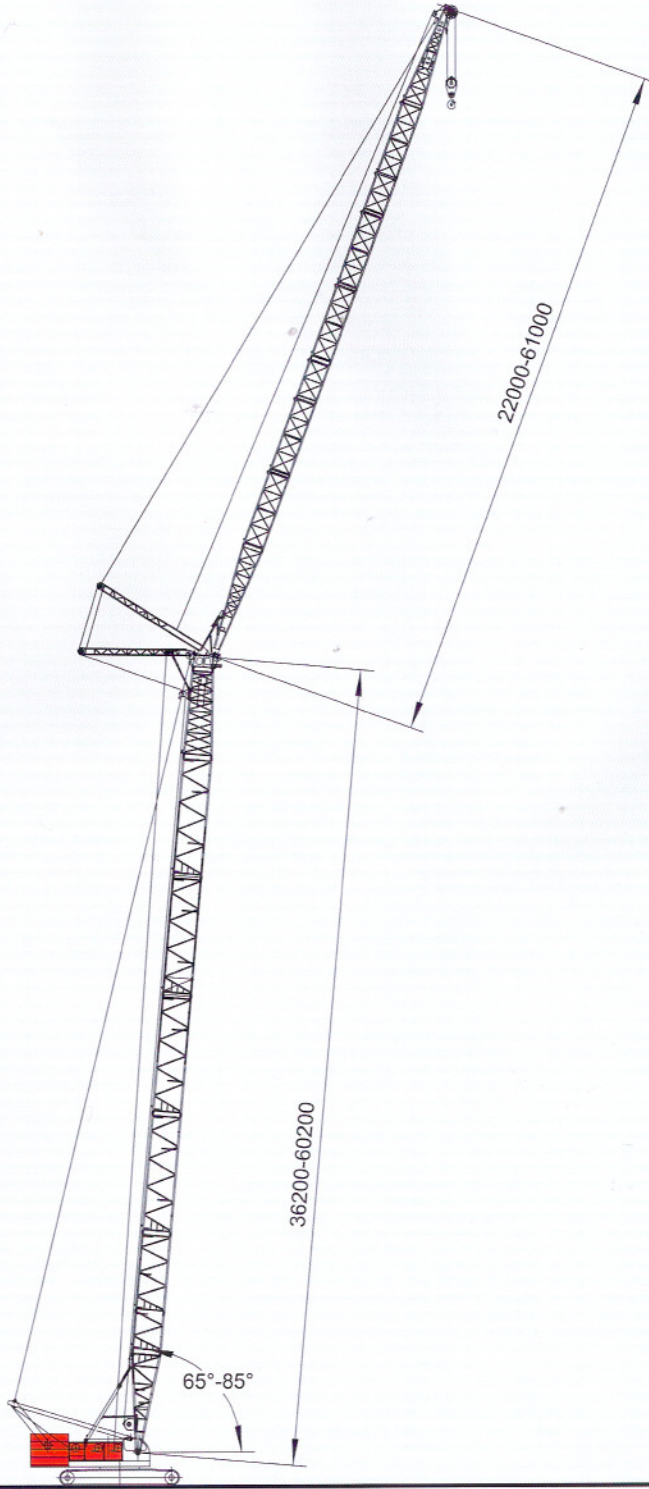
Overall Dimensions





总体尺寸

Overall Dimensions

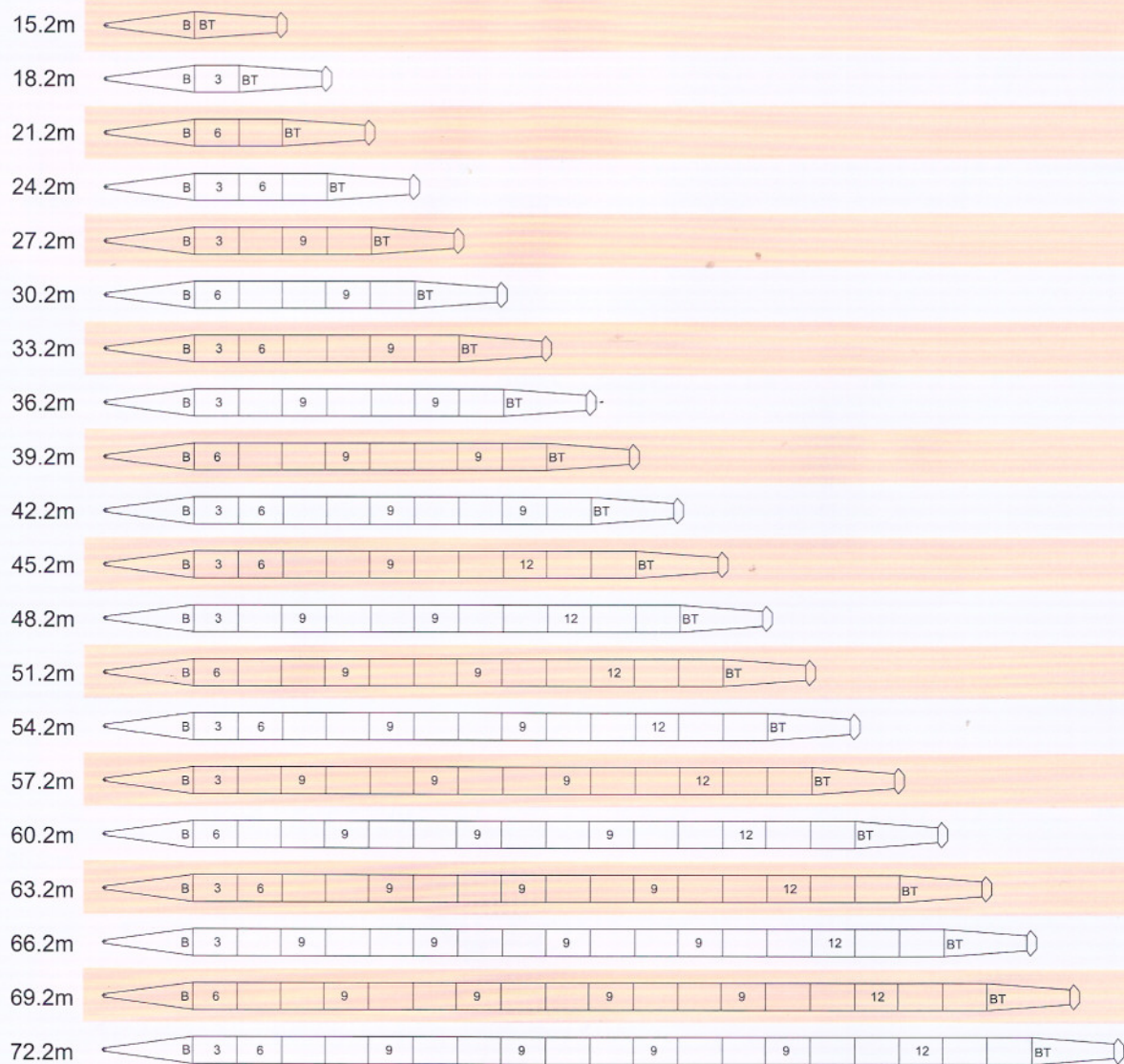


主臂和副臂组合

Boom and Jib Combinations

重主臂工况臂节组合

Heavy boom section combination



注解

符号	臂杆长度	备注
	7.6米	主臂基础臂节
	7.6米	主臂顶部臂节
	3米	主臂3米中间臂节
	6米	主臂6米中间臂节
	9米	主臂9米中间臂节
	12米	主臂12米中间臂节

Note

Symbol	Boom length	Remarks
	7.6m	Boom foot section
	7.6m	Boom top section
	3m	Boom 3m intermediate section
	6m	Boom 6m intermediate section
	9m	Boom 9m intermediate section
	12m	Boom 12m intermediate section



主臂和副臂组合

Boom and Jib Combinations

重型加长主臂工况臂节合

Heavy lengthening boom section combination



注解

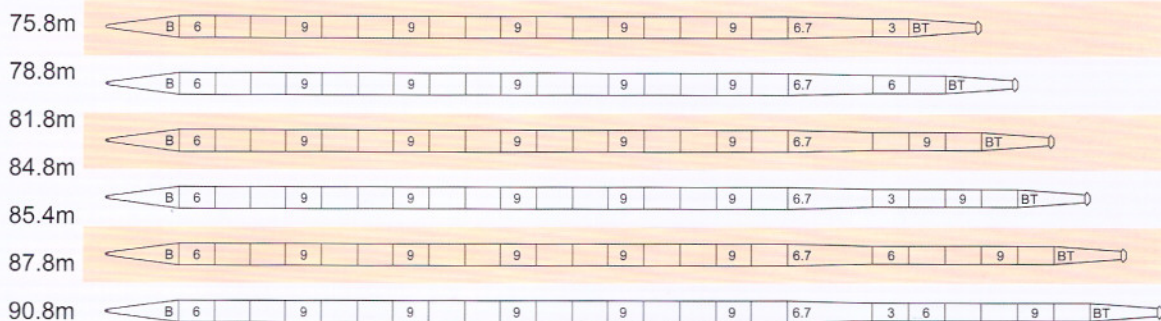
符号	臂杆长度	备注
	7.6米	主臂基础臂节
	8.8米	重型主臂顶部臂节
	3米	主臂3米中间臂节
	6米	主臂6米中间臂节
	9米	主臂9米中间臂节
	12米	重型主臂12米中间臂节

Note

Symbol	Boom length	Remarks
	7.6m	Boom foot section
	8.8m	Heavy boom top section
	3m	Boom 3m intermediate section
	6m	Boom 6m intermediate section
	9m	Boom 9m intermediate section
	12m	Boom 12m intermediate section

重轻混合主臂工况臂节组合

Heavy-light boom section combination



注解

符号	臂杆长度	备注
	7.6米	主臂基础臂节
	7.5米	塔臂顶部臂节
	6米	主臂6米中间臂节
	9米	主臂9米中间臂节
	6.7米	6.7米变径臂节
	3米	塔臂3米中间臂节
	6米	塔臂6米中间臂节
	9米	塔臂9米中间臂节

Note

Symbol	Boom length	Remarks
	7.6m	Boom foot section
	7.5m	Luffing jib top section
	6m	Boom 6m intermediate section
	9m	Boom 9m intermediate section
	6.7m	6.7m tapered section
	3m	Luffing jib 3m intermediate section
	6m	Luffing jib 6m intermediate section
	9m	Luffing jib 9m intermediate section

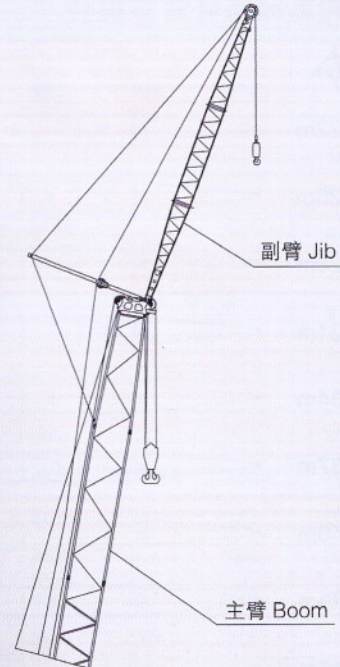
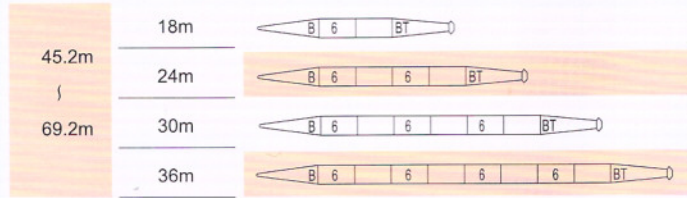
主臂和副臂组合

Boom and Jib Combinations

固定副臂工况臂节组合

Fixed jib section combination

主臂长度 副臂长度 副臂组合
 Boom length Fly jib length Fly jib combination



注解

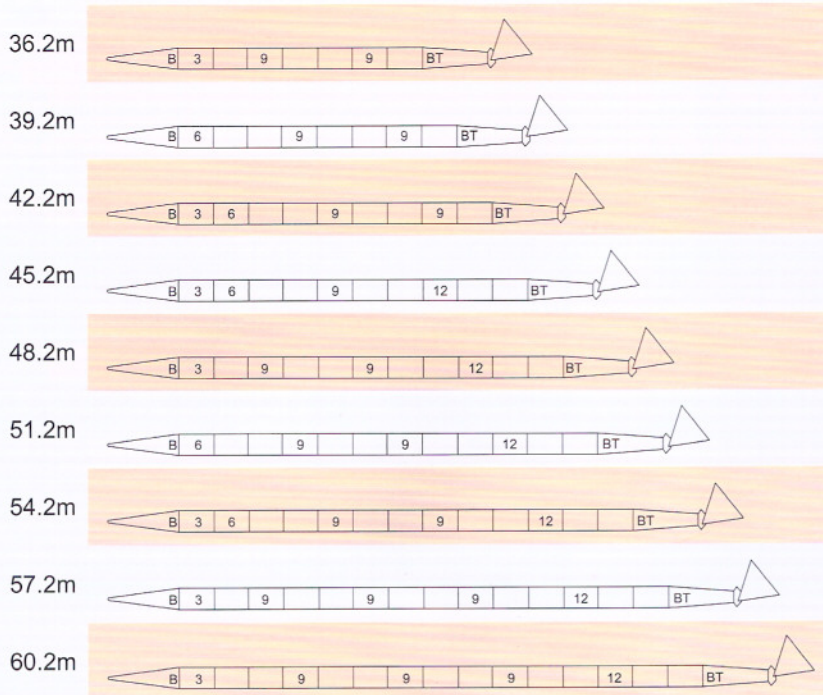
符号	臂杆长度	备注
	6米	固定副臂基础臂节
	6米	固定副臂顶部臂节
	6米	固定副臂6米中间臂节

Note

Symbol	Length	Remarks
	6m	Fly jib basic section
	6m	Fly jib top section
	6m	Fly jib 6m intermediate section

塔式工况主臂臂节组合

Luffing jib boom section combination



注解

符号	臂杆长度	备注
	7.6米	主臂基础臂节
	7.6米	主臂顶部臂节
	3米	主臂3米中间臂节
	6米	主臂6米中间臂节
	9米	主臂9米中间臂节
	12米	主臂12米中间臂节

Note

Symbol	Boom length	Remarks
	7.6m	Boom foot section
	7.6m	Boom top section
	3m	Boom 3m intermediate section
	6m	Boom 6m intermediate section
	9m	Boom 9m intermediate section
	12m	Boom 12m intermediate section

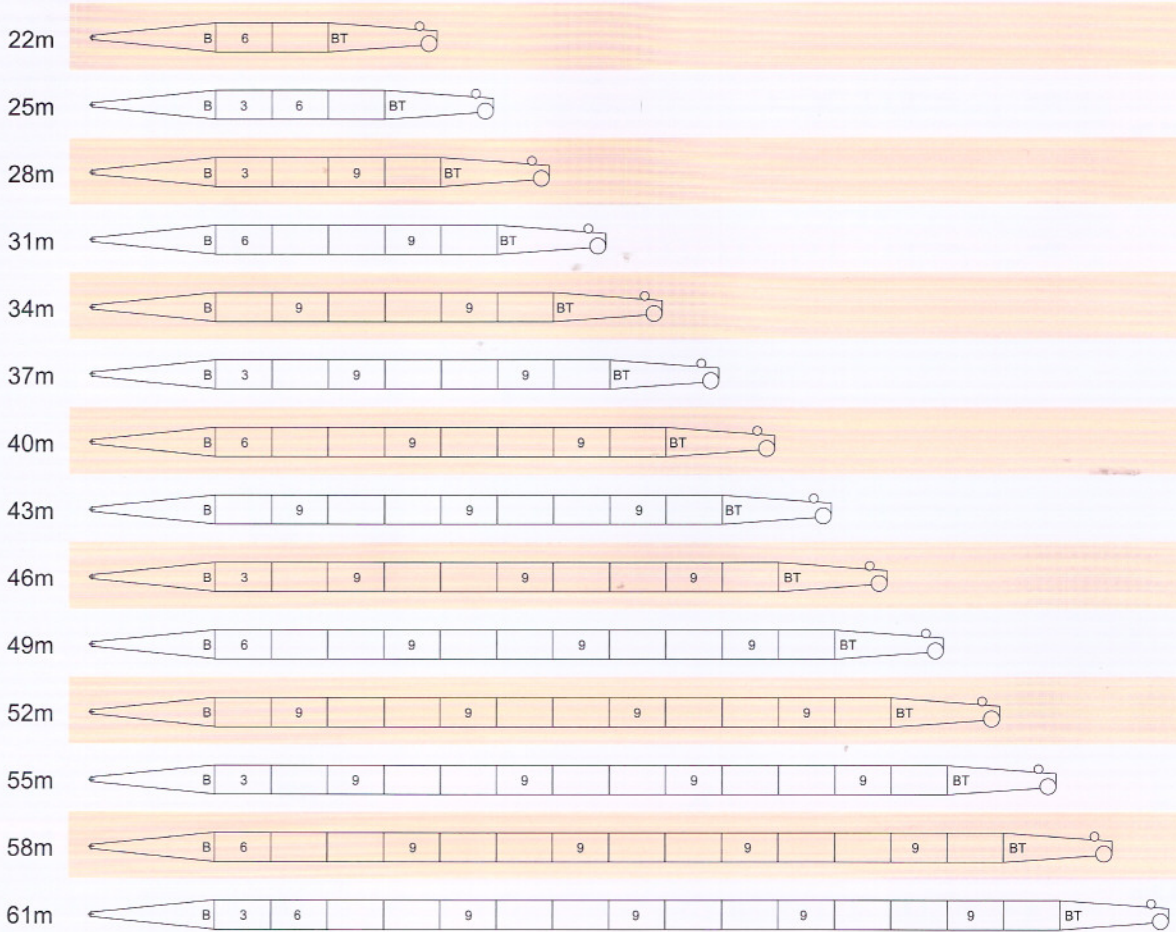


主臂和副臂组合

Boom and Jib Combinations

塔式工况塔臂臂节组合

Luffing jib section combination



注解

符号	臂杆长度	备注
	8.5米	塔臂基础臂节
	7.5米	塔臂顶部臂节
	3米	塔臂3米中间臂节
	6米	塔臂6米中间臂节
	9米	塔臂9米中间臂节

Note

Symbol	Boom length	Remarks
	8.5m	Luffing jib foot section
	7.5m	Luffing jib top section
	3m	Luffing jib 3m intermediate section
	6m	Luffing jib 6m intermediate section
	9m	Luffing jib 9m intermediate section

重主臂工况额定起重能力表

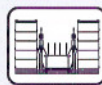
Rated Lifting Capacity Load Chart(Heavy Boom Duty)



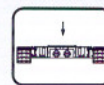
15.2m-72.2m



360°



88.5t



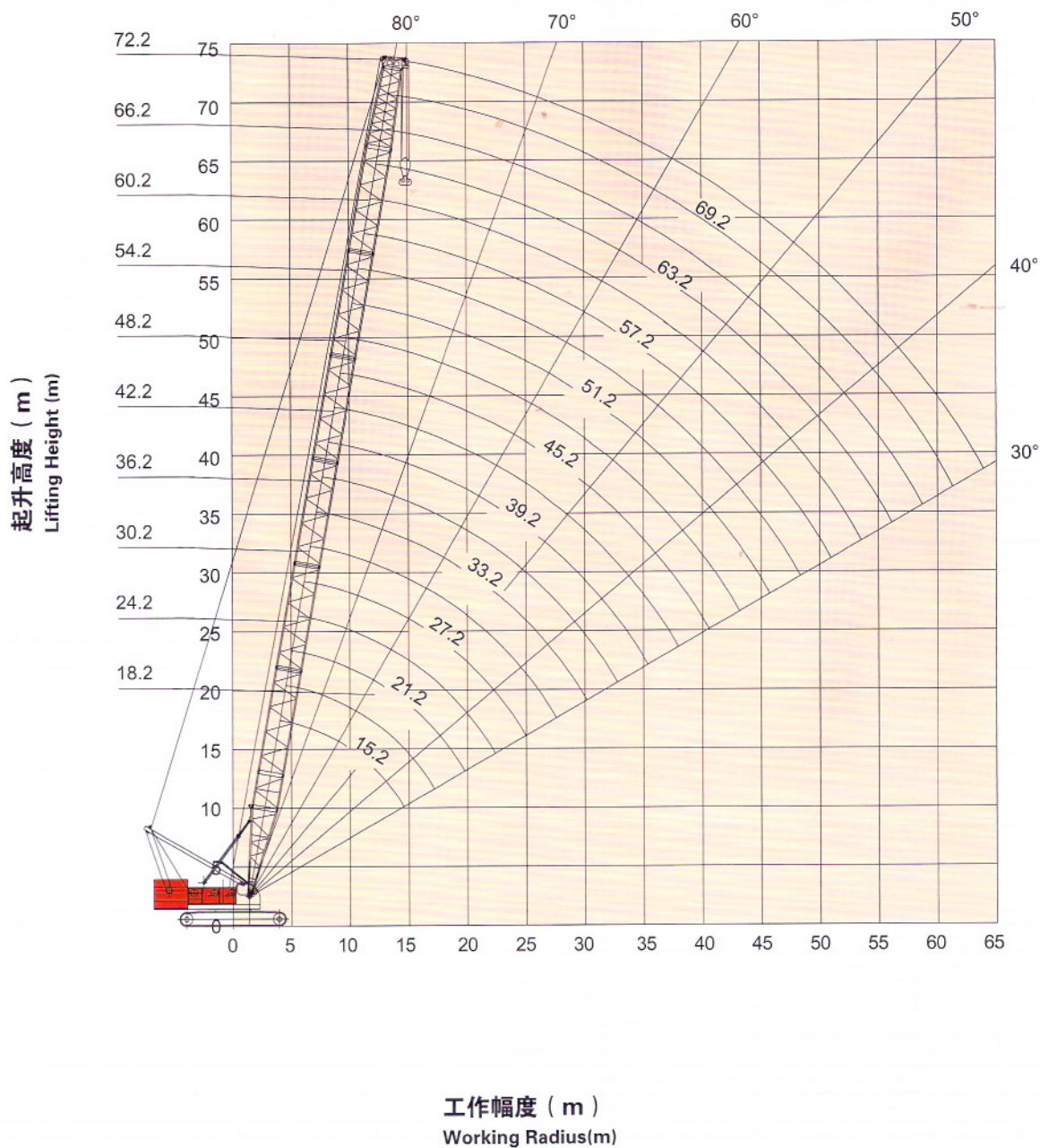
24t

Height (m)	15.2	21.2	27.2	33.2	39.2	45.2	51.2	57.2	63.2	69.2	72.2	Height (m)
4.8	260.0											4.8
5.0	260.0											5.0
6.0	210.0	6.1/195										6.0
7.0	180.2	165.5	7.1/164.1									7.0
8.0	159.0	150.5	142.9	133.9								8.0
9.0	135.1	128.6	122.7	117.5	112.2							9.0
10.0	121.8	118.5	115.0	109.1	103.6	10.2/96	11.3/82.6					10.0
12.0	96.3	95.4	92.8	88.6	84.6	80.8	77.4	12.3/72	13.4/63.3			12.0
14.0	77.8	76.9	76.5	74.3	71.2	68.3	65.5	62.8	60.2	14.4/56.4	14.9/53	14.0
16.0	15.1/70.5	64.2	63.8	63.4	61.3	58.9	56.6	54.4	52.2	50.4	49.3	16.0
18.0		54.8	54.4	54.1	53.6	51.6	49.7	47.7	45.8	44.4	43.4	18.0
20.0		47.7	47.3	47.0	46.5	45.8	44.1	42.3	40.7	39.4	38.6	20.0
22.0		20.3/46.9	41.7	41.3	40.9	40.4	39.5	37.9	36.4	35.3	34.6	22.0
24.0			37.2	36.8	36.4	35.9	35.5	34.2	32.8	31.9	31.2	24.0
26.0			25.5/34.4	33.1	32.6	32.1	31.7	31.1	29.8	29.0	28.3	26.0
28.0				30.0	29.5	29.0	28.6	28.0	27.2	26.4	25.8	28.0
30.0				27.3	26.8	26.3	25.9	25.4	24.8	24.2	23.6	30.0
32.0				30.7/26.5	24.5	24.0	23.6	23.1	22.5	22.0	21.7	32.0
34.0					22.5	22.0	21.6	21.0	20.5	20.1	20.0	34.0
36.0					35.8/20.9	20.2	19.8	19.3	18.8	18.4	18.2	36.0
38.0						18.7	18.3	17.7	17.2	16.9	16.7	38.0
40.0						17.3	16.9	16.3	15.8	15.4	15.2	40.0
42.0						41/16.6	15.6	15.1	14.5	14.1	14.0	42.0
44.0							14.5	13.9	13.4	13.0	12.8	44.0
46.0							13.5	12.9	12.4	12.0	11.8	46.0
48.0							46.2/13.4	12.0	11.5	11.0	10.9	48.0
50.0								11.1	10.6	10.2	10.0	50.0
52.0								51.4/10.6	9.8	9.4	9.2	52.0
54.0									9.1	8.7	8.5	54.0
56.0									8.4	8.0	7.8	56.0
58.0									56.6/8.2	7.4	7.2	58.0
60.0										7.0	6.8	60.0
62.0										61.8/6.7	6.3	62.0
64.0											5.8	64.0
66.0											5.7	66.0



重主臂工况作业范围

Working Range (Heavy Boom Duty)



辅助臂工况额定起重能力表

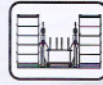
Rated Lifting Capacity Load Chart(Runner Duty)



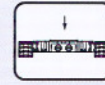
15.2m-72.2m



360°



88.5t



24t

	15.2	21.2	27.2	33.2	39.2	45.2	51.2	57.2	63.2	69.2	72.2	
m												m
6.0	25.0/6.2											6.0
7.0	25.04	25.0/7.3										7.0
8.0	25.04	25.04	25.0/8.3									8.0
9.0	25.04	25.04	25.04	25.0/9.4								9.0
10.0	25.04	25.04	25.04	25.04	25.0/10.4	25.0/11.4						10.0
12.0	25.04	25.04	25.04	25.04	25.04	25.04	25.0/12.5	25.0/13.5				12.0
14.0	25.04	25.04	25.04	25.04	25.04	25.04	25.00	25.00	25.0/14.6			14.0
15.0	25.04	25.04	25.04	25.04	25.04	25.04	25.00	25.00	25.00	25.0/15.6		15.0
16.0	25.0/16.9	25.04	25.04	25.04	25.04	25.04	25.00	25.00	25.00	25.00	25.0/16.1	16.0
18.0		25.04	25.04	25.04	25.04	25.04	25.00	25.00	25.00	25.00	25.00	18.0
20.0		25.04	25.04	25.04	25.04	25.04	25.00	25.00	25.00	25.00	25.00	20.0
22.0		25.04	25.04	25.04	25.04	25.04	25.00	25.00	25.00	25.00	25.00	22.0
24.0			25.04	25.04	25.04	25.04	25.00	25.00	25.00	25.00	25.00	24.0
26.0			25.04	25.04	25.04	25.04	25.00	25.00	25.00	25.00	25.00	26.0
28.0			25.0/27.3	25.04	25.04	25.04	25.00	25.00	25.00	25.00	24.58	28.0
30.0				25.04	25.04	25.04	24.75	24.17	23.59	22.82	22.44	30.0
32.0				24.40	23.76	23.18	22.60	21.93	21.35	20.77	20.48	32.0
34.0				24.0/32.5	21.90	21.22	20.64	20.06	19.48	18.80	18.51	34.0
36.0					20.20	19.63	18.95	18.37	17.79	17.20	16.82	36.0
38.0					18.9/37.7	18.14	17.45	16.87	16.28	15.70	15.31	38.0
40.0						16.82	16.14	15.55	14.96	14.28	13.99	40.0
42.0						15.60	15.01	14.32	13.73	13.15	12.85	42.0
44.0							13.87	13.28	12.69	12.00	11.71	44.0
46.0							12.93	12.34	11.65	11.05	10.76	46.0
48.0							12.00	11.39	10.79	10.10	9.80	48.0
50.0								10.63	9.93	9.33	9.04	50.0
52.0								9.80	9.16	8.57	8.27	52.0
54.0									8.49	7.89	7.49	54.0
56.0									7.80	7.20	6.80	56.0
58.0									7.20	6.50	6.20	58.0
60.0										6.00	5.60	60.0
62.0										5.40	5.10	62.0
64.0											4.60	64.0



带辅助臂时主臂工况额定起重能力表

Rated Lifting Capacity Load Chart
(Boom Duty With Runner)



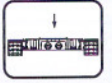
15.2m-72.2m




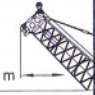
360°



88.5t



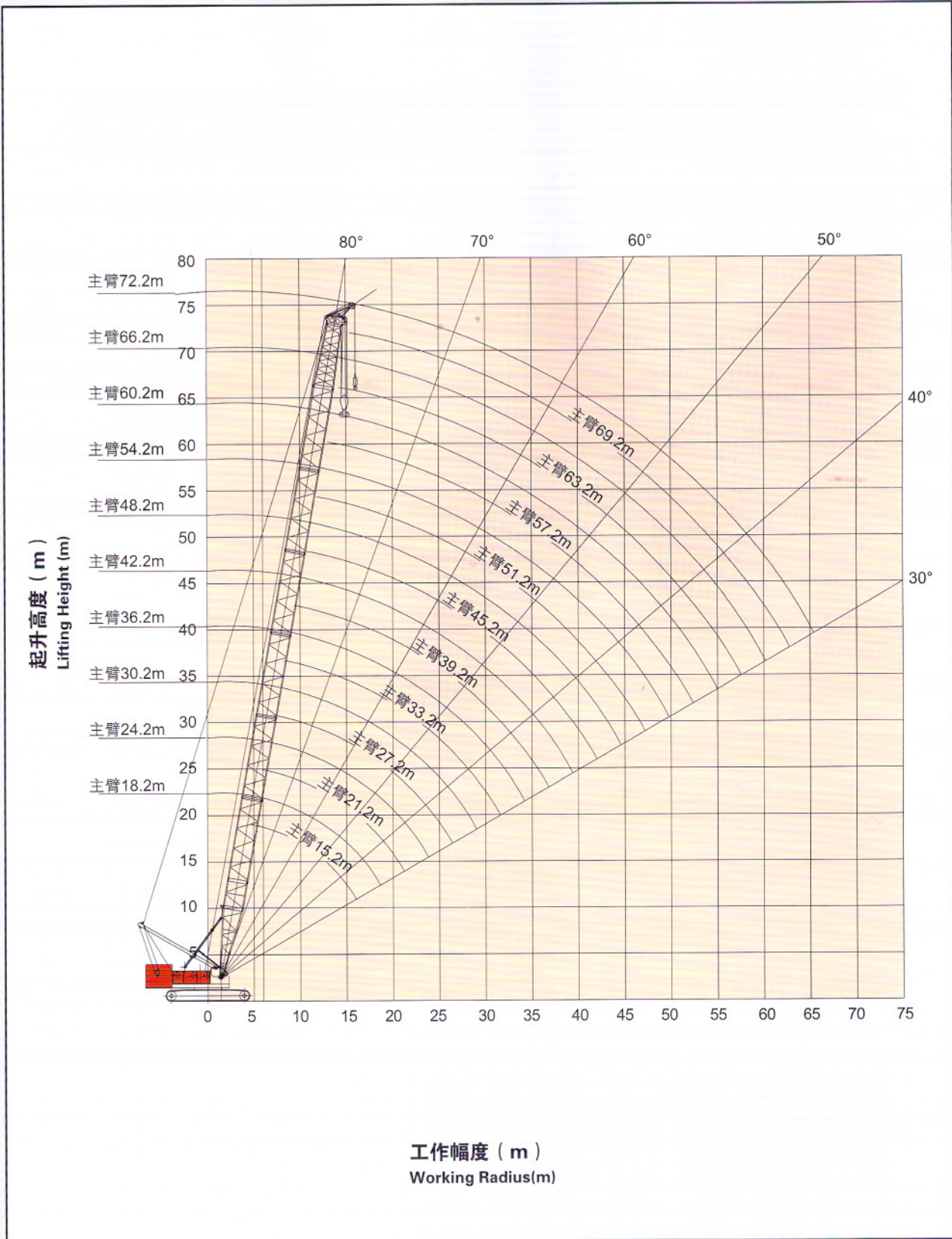
24t

 m	15.2	18.2	21.2	24.2	27.2	30.2	33.2	36.2	39.2	42.2	 m
5.0	247.6	227.0/5.4	198.0/5.9								5.0
6.0	208.0	201.0	193.0	178.7/6.4	160.6/6.9						6.0
7.0	173.2	168.7	164.3	161.1	158.3	146.3/7.4					7.0
8.0	157.5	153.0	148.9	145.0	141.2	137.7	132.3	121.5/8.5			8.0
9.0	133.6	130.1	127.0	124.0	121.1	118.5	115.9	113.3	110.7	100.9/9.5	9.0
10.0	116.0	113.2	110.7	108.3	106.1	103.8	101.7	99.6	97.7	95.7	10.0
12.0	89.9	89.5	87.7	86.0	84.4	82.9	81.3	79.9	78.4	77.0	12.0
14.0	72.5	72.2	72.0	71.1	69.9	68.7	67.5	66.3	65.2	64.1	14.0
15.0	66.2/14.9	65.9	65.6	65.4	64.4	63.3	62.3	61.2	60.2	59.2	15.0
16.0		60.6	60.3	60.0	59.6	58.7	57.7	56.7	55.8	54.9	16.0
18.0		54.3/17.5	51.5	51.3	51.0	50.7	50.1	49.3	48.5	47.7	18.0
20.0			44.9	44.6	44.3	44.0	43.8	43.4	42.7	42.0	20.0
22.0			44.5/20.1	39.4	39.1	38.8	38.5	38.2	37.9	37.5	22.0
24.0				38.0/22.7	34.8	34.5	34.2	33.9	33.6	33.3	24.0
26.0					32.9/25.3	31.0	30.7	30.3	30.1	29.8	26.0
28.0						28.2/27.9	27.8	27.5	27.2	26.8	28.0
30.0							25.3	25.0	24.6	24.3	30.0
32.0							25.0/30.3	22.7	22.5	22.2	32.0
34.0								21.8/33.1	20.6	20.3	34.0
36.0									21.1/35.7	18.6	36.0
38.0										17.1	38.0
倍率	19	17	15	14	12	11	10	10	9	8	倍率



辅助臂工况作业范围

Working Range (Runner Duty)



重型加长主臂工况额定起重能力表

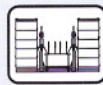
Rated Lifting Capacity Load Chart (Heavy Lengthening Boom Duty)



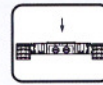
73.4m-91.4m





360°



88.5t



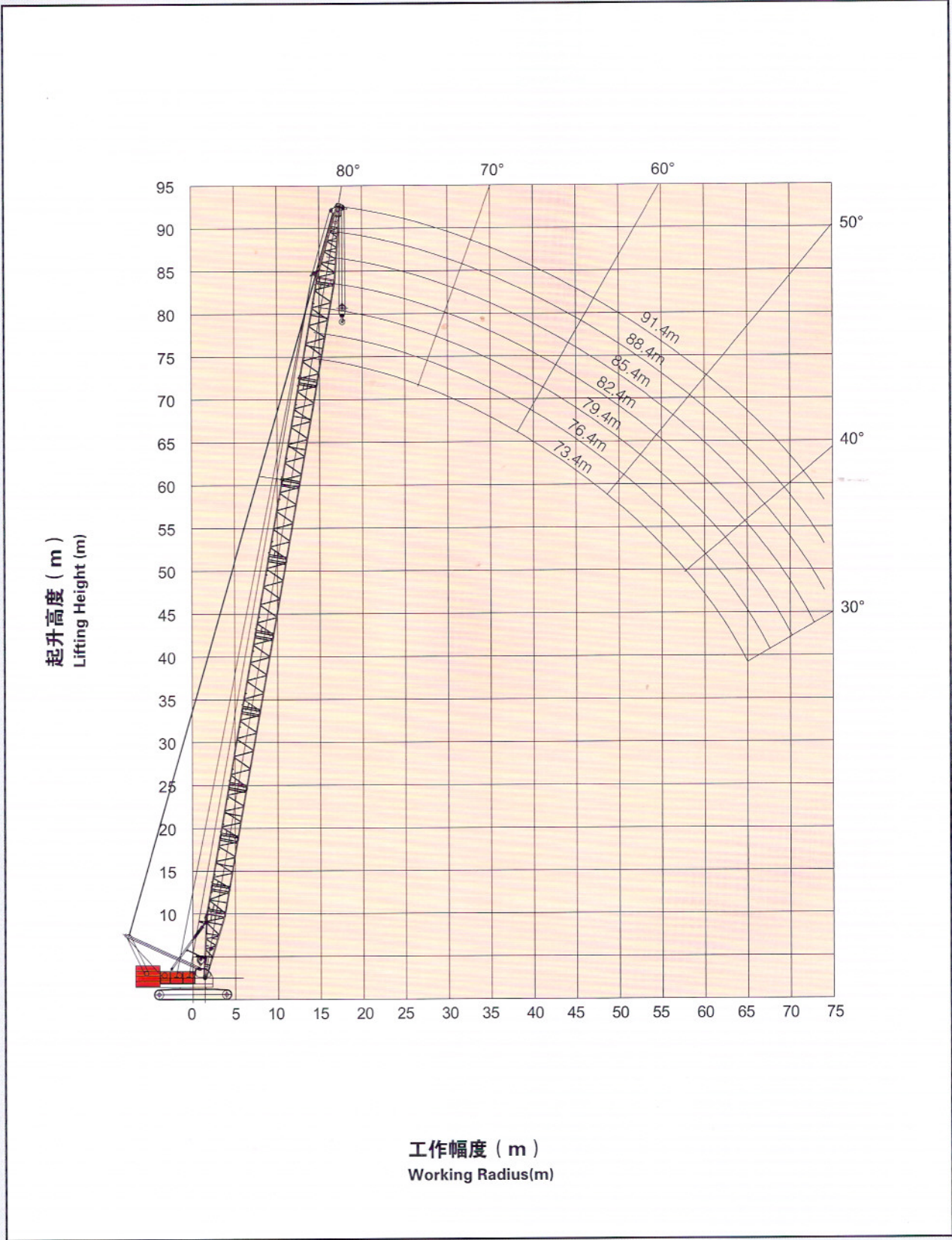
24t

 m	73.4	76.4	79.4	82.4	85.4	88.4	91.4	 m
14.0	14.5/54.9	15.1/50.5	15.6/44.8					14.0
16.0	49.30	48.30	44.30	16.1/40.9	16.1/40.9	17.2/33.9	17.7/30.7	16.0
18.0	43.80	42.40	41.40	38.80	38.80	33.10	30.40	18.0
20.0	38.60	37.70	36.80	36.10	36.10	31.10	28.50	20.0
22.0	34.70	33.80	33.00	32.40	32.40	29.30	26.80	22.0
24.0	31.30	30.50	29.80	29.20	29.20	27.50	25.00	24.0
26.0	28.80	27.70	27.00	26.50	26.50	25.20	23.40	26.0
28.0	25.90	25.30	24.70	24.10	24.10	22.90	21.80	28.0
30.0	23.80	23.20	22.60	22.00	22.00	20.90	20.30	30.0
32.0	21.90	21.30	20.70	20.20	20.20	19.10	18.50	32.0
34.0	20.30	19.70	19.10	18.60	18.60	17.50	17.00	34.0
36.0	18.80	18.20	17.60	17.10	17.10	16.10	15.60	36.0
38.0	17.10	16.80	16.30	15.80	15.80	14.90	14.30	38.0
40.0	15.90	15.50	15.10	14.70	14.70	13.70	13.20	40.0
42.0	14.50	14.20	13.90	13.60	13.60	12.70	12.10	42.0
44.0	13.40	13.10	12.80	12.60	12.60	11.70	11.20	44.0
46.0	12.40	12.10	11.80	11.50	11.50	10.80	10.30	46.0
48.0	11.60	11.20	10.80	10.60	10.60	10.00	9.50	48.0
50.0	10.50	10.30	10.00	9.80	9.80	9.20	8.50	50.0
52.0	9.80	9.60	9.20	9.00	9.00	8.40	7.60	52.0
54.0	9.10	8.80	8.50	8.30	8.30	7.70	6.70	54.0
56.0	8.60	8.20	7.80	7.60	7.60	7.10	5.90	56.0
58.0	7.80	7.60	7.20	7.00	7.00	6.40	5.10	58.0
60.0	7.30	7.00	6.70	6.40	6.40	5.90	4.40	60.0
62.0	6.70	6.50	6.10	5.90	5.90	5.20	3.70	62.0
64.0	6.20	6.00	5.60	5.40	5.40	4.50	3.00	64.0
66.0	65.3/5.8	5.50	5.20	4.90	4.90	3.80	2.30	66.0
68.0		67.8/5.1	4.70	4.50	4.50	3.10	1.70	68.0
70.0			4.30	4.10	4.10	2.50		70.0
72.0			70.4/4.2	3.70	3.70	1.90		72.0
74.0				3.50	3.50			74.0



重型加长主臂工况作业范围

Working Range (Heavy Lengthening Boom Duty)



起升高度 (m)
Lifting Height (m)

工作幅度 (m)
Working Radius(m)

重轻混合主臂工况额定起重能力表

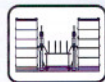
Rated Lifting Capacity Load Chart (Heavy-light Boom Combination Duty)



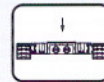
75.8m-90.8m



360°



88.5t



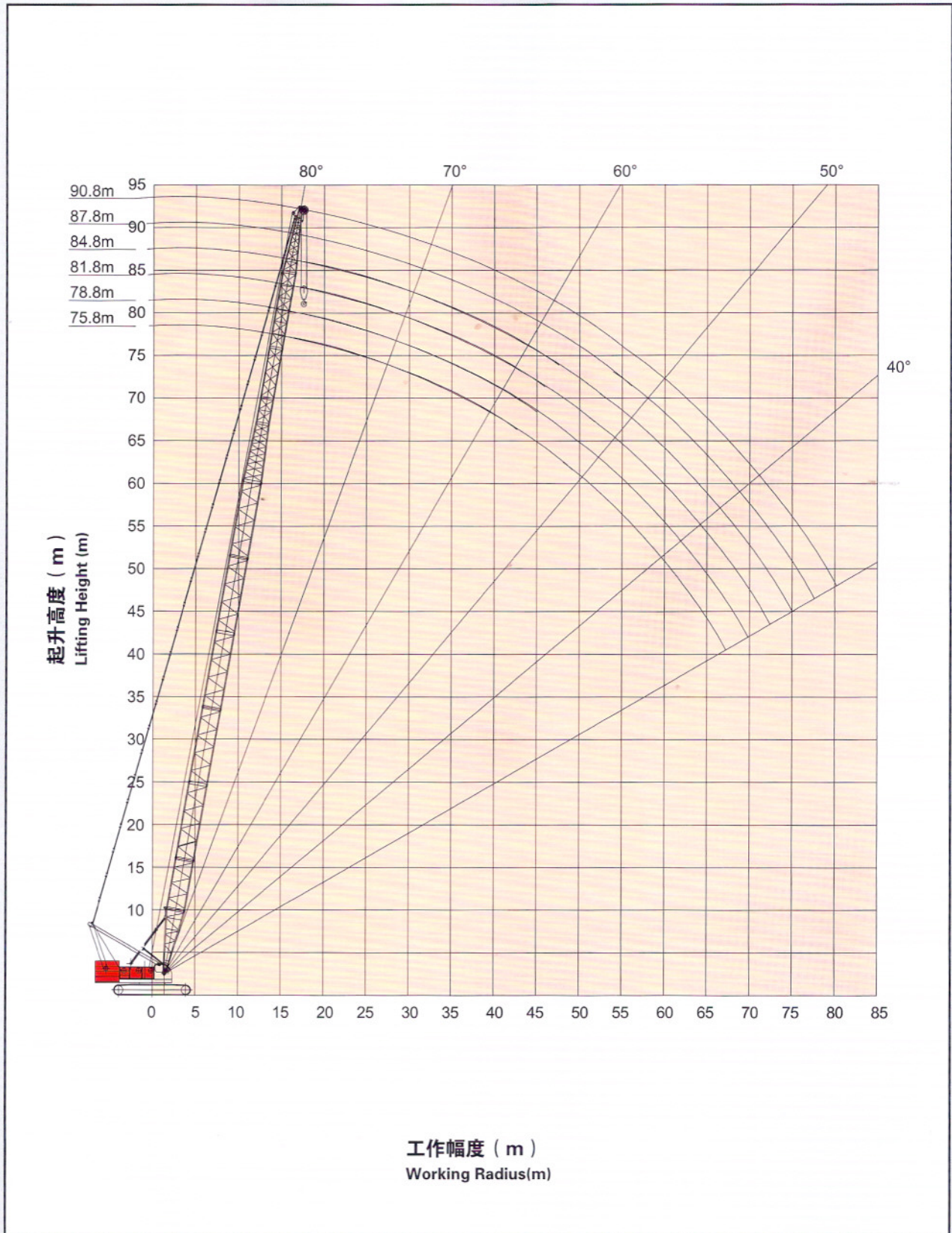
24t

m	75.8m-90.8m						m
	75.8	78.8	81.8	84.8	87.7	90.8	
14.0	31.5/15.0	29.1/15.5					14.0
16.0	31.1	28.9	25.8	22.9/16.6	20.0/17.1	17.6/17.6	16.0
18.0	30.4	28.3	25.4	22.5	19.7	17.4	18.0
20.0	29.7	27.7	24.6	21.9	19.0	16.7	20.0
22.0	27.7	27.0	24.0	21.3	18.2	15.8	22.0
24.0	25.2	24.6	23.4	20.6	17.4	15.2	24.0
26.0	23.0	22.5	22.0	20.0	16.7	14.8	26.0
28.0	21.1	20.6	20.2	19.4	15.9	14.3	28.0
30.0	19.4	19.0	18.6	18.1	15.2	13.7	30.0
32.0	17.9	17.5	17.1	16.7	14.6	13.1	32.0
34.0	16.6	16.2	15.9	15.4	13.9	12.5	34.0
36.0	15.4	15.1	14.7	14.3	13.3	12.0	36.0
38.0	14.3	14.0	13.7	13.3	12.7	11.5	38.0
40.0	13.3	13.0	12.7	12.4	12.1	10.9	40.0
42.0	12.4	12.2	11.9	11.5	11.2	10.4	42.0
44.0	11.6	11.4	11.1	10.7	10.5	9.9	44.0
46.0	10.9	10.6	10.4	10.0	9.8	9.4	46.0
48.0	10.2	10.0	9.7	9.4	9.1	8.8	48.0
50.0	9.6	9.3	9.1	8.8	8.5	8.2	50.0
52.0	9.0	8.8	8.5	8.2	8.0	7.6	52.0
54.0	8.5	8.2	8.0	7.7	7.5	7.1	54.0
56.0	8.0	7.7	7.5	7.2	7.0	6.7	56.0
58.0	7.5	7.3	7.1	6.8	6.5	6.2	58.0
60.0	7.1	6.9	6.6	6.3	6.1	5.8	60.0
62.0	6.7	6.5	6.2	5.9	5.7	5.4	62.0
64.0	6.3	6.1	5.9	5.6	5.4	5.1	64.0
66.0	5.8	5.7	5.5	5.2	5.0	4.7	66.0
68.0	5.5	5.3	5.2	4.9	4.7	4.4	68.0
70.0		4.9	4.8	4.6	4.4	4.1	70.0
72.0			4.5	4.2	4.1	3.8	72.0
74.0			4.4	3.9	3.8	3.5	74.0
76.0				3.7	3.5	3.3	76.0
78.0					3.2	3.0	78.0
80.0						2.6	80.0



重轻混合主臂工况作业范围

Working Range (Heavy-light Boom Combination Duty)



起升高度 (m)
Lifting Height (m)

工作幅度 (m)
Working Radius(m)

固定副臂工况额定起重能力表

Rated Lifting Capacity Load Chart (Fixed Jib Duty)



45.2m-69.2m

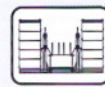


10°, 30°

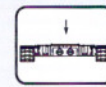
18m-36



360°



88.5t



24t

m	45.2								m
	18.0		24.0		30.0		36.0		
	10°	30°	10°	30°	10°	30°	10°	30°	
14.0									14.0
18.0	18.60		14.1/19.2						18.0
22.0	18.00	16.40	13.80		10.50		7.5/22.4		22.0
26.0	17.50	16.10	13.30	12.10	10.20		7.30		26.0
30.0	17.00	15.70	12.90	11.80	9.90	9.00	7.10		30.0
34.0	16.60	15.30	12.60	11.60	9.60	8.70	6.90	6.10	34.0
38.0	16.20	14.90	12.20	11.40	9.30	8.50	6.70	5.70	38.0
42.0	15.80	14.50	11.90	11.20	9.10	8.40	6.50	5.40	42.0
46.0	13.80	14.10	11.60	11.00	8.80	8.20	6.20	5.10	46.0
50.0	11.90	12.30	11.40	10.80	8.60	8.10	5.80	4.80	50.0
54.0	10.30	10.60	10.70	10.60	8.40	7.90	5.50	4.60	54.0
58.0	9.0/57.7	9.10	9.30	9.70	8.20	7.70	5.20	4.40	58.0
62.0			8.10	8.40	8.00	7.50	4.90	4.20	62.0
66.0					7.30	7.30	4.60	4.00	66.0
70.0						6.60	4.30	3.90	70.0
74.0							4.10	3.90	74.0
78.0									78.0
82.0									82.0
86.0									86.0
m	48.2								m
	18.0		24.0		30.0		36.0		
	10°	30°	10°	30°	10°	30°	10°	30°	
14.0									14.0
18.0	18.60		14.1/19.7						18.0
22.0	18.00	16.3/22.3	13.80		10.50		7.4/23.5		22.0
26.0	17.50	16.10	13.30	12.10	10.20		7.30		26.0
30.0	17.00	15.70	12.90	11.80	9.90	9.00	7.10		30.0
34.0	16.60	15.30	12.60	11.60	9.60	8.70	6.90	6.10	34.0
38.0	16.20	14.90	12.20	11.40	9.30	8.50	6.70	5.70	38.0
42.0	15.70	14.50	11.90	11.20	9.10	8.40	6.50	5.40	42.0
46.0	13.50	14.10	11.60	11.00	8.80	8.20	6.20	5.10	46.0
50.0	11.60	12.10	11.40	10.80	8.60	8.10	5.80	4.80	50.0
54.0	10.00	10.40	10.30	10.60	8.40	7.90	5.50	4.60	54.0
58.0	8.60	8.90	9.00	9.40	8.20	7.70	5.20	4.40	58.0
62.0		7.8/61.2	7.80	8.10	8.00	7.50	4.90	4.20	62.0
66.0			6.70	6.90	7.00	7.20	4.60	4.00	66.0
70.0					6.00	6.40	4.30	3.90	70.0
74.0						5.6/73.2	4.10	3.90	74.0
78.0							3.9/77.0	3.70	78.0
82.0									82.0
86.0									86.0
90.0									90.0



固定副臂工况额定起重能力表

Rated Lifting Capacity Load Chart (Fixed Jib Duty)



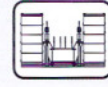
45.2m-69.2m



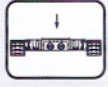
10°, 30°
18m-36



360°



88.5t



24t

m	51.2								m
	18.0		24.0		30.0		36.0		
	10°	30°	10°	30°	10°	30°	10°	30°	
14.0									14.0
18.0	18.60								18.0
22.0	18.00	16.3/22.7	13.80		10.50		7.4/23.5		22.0
26.0	17.50	16.10	13.30	12.0/26.5	10.20		7.30		26.0
30.0	17.00	15.70	12.90	11.80	9.90	8.9/30.4	7.10		30.0
34.0	16.60	15.30	12.60	11.60	9.60	8.70	6.90	6.1/34.3	34.0
38.0	16.20	14.90	12.20	11.40	9.30	8.50	6.70	5.70	38.0
42.0	15.40	14.50	11.90	11.20	9.10	8.40	6.50	5.40	42.0
46.0	13.10	13.80	11.60	11.00	8.80	8.20	6.20	5.10	46.0
50.0	11.20	11.80	11.40	10.80	8.60	8.10	5.80	4.80	50.0
54.0	9.60	10.10	10.00	10.60	8.40	7.90	5.50	4.60	54.0
58.0	8.30	8.60	8.60	9.20	8.20	7.70	5.20	4.40	58.0
62.0	7.10	7.30	7.40	7.90	7.70	7.50	4.90	4.20	62.0
66.0			6.40	6.70	6.60	7.20	4.60	4.00	66.0
70.0				5.60	5.70	6.10	4.30	3.90	70.0
74.0					4.90	5.10	4.10	3.90	74.0
78.0							3.90	3.70	78.0
82.0								3.50	82.0
86.0									86.0
m	54.2								m
	18.0		24.0		30.0		36.0		
	10°	30°	10°	30°	10°	30°	10°	30°	
14.0									14.0
18.0	18.60								18.0
22.0	18.00	16.2/23.6	13.80		10.50				22.0
26.0	17.50	16.10	13.30	12.0/27.0	10.20		7.30		26.0
30.0	17.00	15.70	12.90	11.80	9.90	8.9/31.0	7.10		30.0
34.0	16.60	15.30	12.60	11.60	9.60	8.70	6.90	6.0/34.8	34.0
38.0	16.20	14.90	12.20	11.40	9.30	8.50	6.70	5.70	38.0
42.0	15.00	14.50	11.90	11.20	9.10	8.40	6.50	5.40	42.0
46.0	12.80	13.50	11.60	11.00	8.80	8.20	6.20	5.10	46.0
50.0	10.90	11.50	11.30	10.80	8.60	8.10	5.80	4.80	50.0
54.0	9.30	9.80	9.70	10.40	8.40	7.90	5.50	4.60	54.0
58.0	7.90	8.30	8.30	8.90	8.20	7.70	5.20	4.40	58.0
62.0	6.80	7.00	7.10	7.60	7.40	7.50	4.90	4.20	62.0
66.0	5.8/65.4	5.90	6.10	6.40	6.30	6.90	4.60	4.00	66.0
70.0			5.10	5.40	5.40	5.90	4.30	3.90	70.0
74.0				4.7/72.5	4.60	4.90	4.10	3.90	74.0
78.0					4.1/76.6	4.00	4.00	4.40	78.0
82.0							3.40	3.60	82.0
86.0								3.2/84.5	86.0
90.0									90.0

固定副臂工况额定起重能力表

Rated Lifting Capacity Load Chart (Fixed Jib Duty)



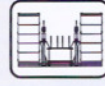
45.2m-69.2m



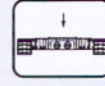
10°, 30°
18m-36



360°



88.5t



24t

m	57.2								m
	18.0		24.0		30.0		36.0		
	10°	30°	10°	30°	10°	30°	10°	30°	
14.0									14.0
18.0	18.6/18.4								18.0
22.0	18.00	16.2/23.7	13.80		10.4/22.6				22.0
26.0	17.50	16.10	13.30	11.9/27.6	10.20		7.30		26.0
30.0	17.00	15.70	12.90	11.80	9.90	8.9/31.4	7.10		30.0
34.0	16.60	15.30	12.60	11.60	9.60	8.70	6.90	6.0/35.4	34.0
38.0	16.20	14.90	12.20	11.40	9.30	8.50	6.70	5.70	38.0
42.0	14.70	14.50	11.90	11.20	9.10	8.40	6.50	5.40	42.0
46.0	12.40	13.20	11.60	11.00	8.80	8.20	6.20	5.10	46.0
50.0	10.50	11.20	10.90	10.80	8.60	8.10	5.80	4.80	50.0
54.0	9.00	9.50	9.30	10.10	8.40	7.90	5.50	4.60	54.0
58.0	7.60	8.00	7.90	8.60	8.20	7.70	5.20	4.40	58.0
62.0	6.40	6.80	6.80	7.30	7.00	7.50	4.90	4.20	62.0
66.0	5.40	5.60	5.70	6.20	6.00	6.60	4.60	4.00	66.0
70.0		4.8/69.2	4.80	5.10	5.10	5.60	4.30	3.90	70.0
74.0			4.1/73.6	4.20	4.20	4.70	4.10	3.80	74.0
78.0					3.50	3.80	3.70	3.70	78.0
82.0						3.2/81.1	3.10	3.40	82.0
86.0							2.9/84.8	2.80	86.0
m	60.2								m
	18.0		24.0		30.0		36.0		
	10°	30°	10°	30°	10°	30°	10°	30°	
14.0									14.0
18.0	18.4/19.0								18.0
22.0	18.00		13.80		10.4/23.0				22.0
26.0	17.50	16.10	13.30		10.20		7.30		26.0
30.0	17.00	15.70	12.90	11.80	9.90		7.10		30.0
34.0	16.60	15.30	12.60	11.60	9.60	8.70	6.90		34.0
38.0	16.20	14.90	12.20	11.40	9.30	8.50	6.70	5.70	38.0
42.0	14.40	14.50	11.90	11.20	9.10	8.40	6.50	5.40	42.0
46.0	12.10	12.90	11.60	11.00	8.80	8.20	6.20	5.10	46.0
50.0	10.20	10.90	10.60	10.80	8.60	8.10	5.80	4.80	50.0
54.0	8.60	9.20	9.00	9.90	8.40	7.90	5.50	4.60	54.0
58.0	7.30	7.80	7.60	8.40	7.90	7.70	5.20	4.40	58.0
62.0	6.10	6.50	6.40	7.00	6.70	7.50	4.90	4.20	62.0
66.0	5.00	5.30	5.40	5.90	5.70	6.40	4.60	4.00	66.0
70.0	4.10	4.30	4.50	4.90	4.70	5.30	4.30	3.90	70.0
74.0			3.70	3.90	3.90	4.40	4.10	3.90	74.0
78.0				3.20	3.30	3.60	3.40	3.70	78.0
82.0					2.70	2.90	2.90	3.50	82.0
86.0							2.40	3.30	86.0
90.0								2.00	90.0



固定副臂工况额定起重能力表

Rated Lifting Capacity Load Chart (Fixed Jib Duty)



45.2m-69.2m

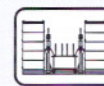


10°, 30°

18m-36



360°



88.5t



24t

m	63.2								m
	18.0		24.0		30.0		36.0		
	10°	30°	10°	30°	10°	30°	10°	30°	
14.0									14.0
18.0	18.4/19.4								18.0
22.0	18.00		13.80		10.3/23.6				22.0
26.0	17.50	16.10	13.30		10.20		7.30		26.0
30.0	17.00	15.70	12.90	11.80	9.90		7.10		30.0
34.0	16.60	15.30	12.60	11.60	9.60	8.70	6.90		34.0
38.0	16.20	14.90	12.20	11.40	9.30	8.50	6.70	5.70	38.0
42.0	14.00	14.50	11.90	11.20	9.10	8.40	6.50	5.40	42.0
46.0	11.80	12.70	11.60	11.00	8.80	8.20	6.20	5.10	46.0
50.0	9.90	10.60	10.30	10.80	8.60	8.10	5.80	4.80	50.0
54.0	8.30	8.90	8.60	9.60	8.40	7.90	5.50	4.60	54.0
58.0	6.90	7.50	7.30	8.10	7.60	7.70	5.20	4.40	58.0
62.0	5.70	6.20	6.10	6.80	6.40	7.30	4.90	4.20	62.0
66.0	4.70	5.00	5.00	5.60	5.30	6.10	4.60	4.00	66.0
70.0	3.80	4.00	4.10	4.60	4.40	5.10	4.30	3.90	70.0
74.0	3.3/73.2	3.30	3.40	3.70	3.60	4.10	3.80	3.90	74.0
78.0			2.80	3.00	3.00	3.40	3.20	3.70	78.0
82.0					2.50	2.70	2.60	3.00	82.0
86.0						2.10	2.10	2.40	86.0
m	66.2								m
	18.0		24.0		30.0		36.0		
	10°	30°	10°	30°	10°	30°	10°	30°	
14.0									14.0
18.0									18.0
22.0	18.00		13.80						22.0
26.0	17.50	16.10	13.30		10.20		7.30		26.0
30.0	17.00	15.70	12.90	11.80	9.90		7.10		30.0
34.0	16.60	15.30	12.60	11.60	9.60	8.70	6.90		34.0
38.0	16.20	14.90	12.20	11.40	9.30	8.50	6.70	5.70	38.0
42.0	13.70	14.50	11.90	11.20	9.10	8.40	6.50	5.40	42.0
46.0	11.40	12.40	11.60	11.00	8.80	8.20	6.20	5.10	46.0
50.0	9.50	10.40	9.90	10.80	8.60	8.10	5.80	4.80	50.0
54.0	7.90	8.60	8.30	9.30	8.40	7.90	5.50	4.60	54.0
58.0	6.60	7.20	6.90	7.80	7.20	7.70	5.20	4.40	58.0
62.0	5.40	5.90	5.70	6.50	6.00	7.00	4.90	4.20	62.0
66.0	4.30	4.80	4.70	5.30	5.00	5.90	4.60	4.00	66.0
70.0	3.60	3.80	3.80	4.30	4.10	4.80	4.30	3.90	70.0
74.0	2.90	3.10	3.20	3.50	3.40	3.90	3.60	3.90	74.0
78.0		2.5/77.0	2.50	2.80	2.80	3.20	2.90	3.50	78.0
82.0			2.2/81.4	2.10	2.20	2.50	2.40	2.80	82.0
86.0								2.20	86.0
90.0									90.0

固定副臂工况额定起重能力表

Rated Lifting Capacity Load Chart (Fixed Jib Duty)



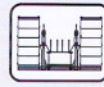
45.2m-69.2m



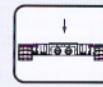
10°, 30°
18m-36



360°



88.5t



24t

m	69.2								m
	18.0		24.0		30.0		36.0		
	10°	30°	10°	30°	10°	30°	10°	30°	
14.00									14.00
18.00									18.00
22.00	18.00		13.8/22.8						22.00
26.00	17.50	16.10	13.30						26.00
30.00	17.00	15.70	12.90	11.80					30.00
34.00	16.60	15.30	12.60	11.60					34.00
38.00	16.20	14.90	12.20	11.40					38.00
42.00	13.40	14.50	11.90	11.20					42.00
46.00	11.10	12.10	11.50	11.00					46.00
50.00	9.20	10.10	9.60	10.80					50.00
54.00	7.60	8.40	8.00	9.00					54.00
58.00	6.20	6.90	6.60	7.50					58.00
62.00	5.00	5.60	5.40	6.20					62.00
66.00	4.10	4.50	4.40	5.10					66.00
70.00	3.30	3.60	3.60	4.00					70.00
74.00	2.60	2.90	2.90	3.30					74.00
78.00	2.1/78.0	2.2/79.4	2.30	2.60					78.00
80.00				2.30					80.00



带固定副臂时主臂工况额定起重能力表

Rated Lifting Capacity Load Chart
(Boom Duty With Fixed Jib)



45.2m-69.2m



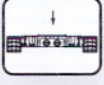
10°, 30°
18m-36



360°



88.5t



24t

固定副臂长度 Fixed jib length	18m									
	45.2		51.2		57.2		63.2		69.2	
	10°	30°	10°	30°	10°	30°	10°	30°	10°	30°
10.0	86.9	85.6	74.3/11.1	73/11.1						
12.0	70.7	69.4	68.0	66.7	65.3/12.1	64/12.1	56.4/13.2	55.9/13.2		
14.0	58.0	56.7	56.0	54.7	53.8	52.5	51.7	50.4	47.5/14.2	46.2/14.2
15.0	53.1	51.8	51.2	49.9	49.3	48.0	47.5	46.2	44.4	43.1
16.0	48.9	47.6	47.6	46.3	46.2	44.9	44.6	43.3	41.7	40.4
18.0	41.8	40.5	40.6	39.3	39.4	38.1	38.0	36.7	36.8	35.5
20.0	36.2	34.9	35.1	33.8	34.0	32.7	32.8	31.5	31.7	30.4
22.0	31.6	30.3	30.6	29.3	29.6	28.3	28.6	27.3	27.5	26.2
24.0	27.8	26.5	26.9	25.6	26.0	24.7	25.0	23.7	24.0	22.7
26.0	24.3	23.0	23.7	22.4	23.0	21.7	22.0	20.7	21.1	19.8
28.0	21.3	20.0	20.8	19.5	20.2	18.9	19.4	18.1	18.6	17.3
30.0	18.8	17.5	18.2	16.9	17.7	16.4	17.1	15.8	16.3	15.0
32.0	16.7	15.4	16.1	14.8	15.4	14.1	14.8	13.5	14.3	13.0
34.0	14.7	13.4	14.1	12.8	13.6	12.3	13.0	11.7	12.3	11.0
36.0	13.1	11.8	12.5	11.2	11.9	10.6	11.3	10.0	10.7	9.4
38.0	11.6	10.3	11.0	9.7	10.4	9.1	9.8	8.5	9.2	7.9
40.0	10.3	9.0	9.6	8.3	9.1	7.8	8.5	7.2	7.8	6.5
42.0			8.5	7.2	7.8	6.5	7.2	5.9	6.6	5.3
44.0			7.4	6.1	6.8	5.5	6.2	4.9	5.5	
46.0			6.4	5.1	5.8		5.1		4.6	
48.0					4.9					
倍率	7	7	6	6	5	5	5	5	4	4

带固定副臂时主臂工况额定起重能力表

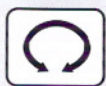
Rated Lifting Capacity Load Chart (Boom Duty With Fixed Jib)



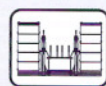
45.2m-69.2m



10°, 30°
18m-36



360°



88.5t



24t

固定副臂长度 Fixed jib length	24m									
	45.2		51.2		57.2		63.2		69.2	
	10°	30°	10°	30°	10°	30°	10°	30°	10°	30°
10.0	85.4	83.4	72.8/11.1	70.8/11.1						
12.0	69.2	67.2	66.5	64.5	63.8/12.1	61.8/12.1	54.9/13.2	52.9/13.2		
14.0	56.5	54.5	54.5	52.5	52.3	50.3	50.2	48.2	46/14.2	44/14.2
15.0	51.6	49.6	49.7	47.7	47.8	45.8	46.0	44.0	42.9	40.9
16.0	47.4	45.4	46.1	44.1	44.7	42.7	43.1	41.1	40.2	38.2
18.0	40.3	38.3	39.1	37.1	37.9	35.9	36.5	34.5	35.3	33.3
20.0	34.7	32.7	33.6	31.6	32.5	30.5	31.3	29.3	30.2	28.2
22.0	30.1	28.1	29.1	27.1	28.1	26.1	27.1	25.1	26.0	24.0
24.0	26.3	24.3	25.4	23.4	24.5	22.5	23.5	21.5	22.5	20.5
26.0	22.8	20.8	22.2	20.2	21.5	19.5	20.5	18.5	19.6	17.6
28.0	19.8	17.8	19.3	17.3	18.7	16.7	17.9	15.9	17.1	15.1
30.0	17.3	15.3	16.7	14.7	16.2	14.2	15.6	13.6	14.8	12.8
32.0	15.2	13.2	14.6	12.6	13.9	11.9	13.3	11.3	12.8	10.8
34.0	13.2	11.2	12.6	10.6	12.1	10.1	11.5	9.5	10.8	8.8
36.0	11.6	9.6	11.0	9.0	10.4	8.4	9.8	7.8	9.2	7.2
38.0	10.1	8.1	9.5	7.5	8.9	6.9	8.3	6.3	7.7	5.7
40.0	8.8	6.8	8.1	6.1	7.6	5.6	7.0	5.0	6.3	
42.0			7.0	5.0	6.3		5.7		5.1	
44.0			5.9		5.3		4.7			
46.0			4.9							
48.0										
倍率	7	7	6	6	5	5	5	4	4	4



带固定副臂时主臂工况额定起重能力表

Rated Lifting Capacity Load Chart
(Boom Duty With Fixed Jib)



45.2m-69.2m



10°, 30°
18m-36



360°



88.5t



24t

FUWA HEAVY INDUSTRY CO.,LTD.

固定副臂长度 Fixed jib length	30m									
	45.2		51.2		57.2		63.2		69.2	
	10°	30°	10°	30°	10°	30°	10°	30°	10°	30°
10.0	83.7	80.9	71.1/11.1	68.3/11.1						
12.0	67.5	64.7	64.8	62.0	62.1/12.1	59.3/12.1	53.2/13.2	50.4/13.2	48.6/13.7	45.8/13.7
14.0	54.8	52.0	52.8	50.0	50.6	47.8	48.5	45.7	47.4	44.6
15.0	49.9	47.1	48.0	45.2	46.1	43.3	44.3	41.5	42.3	39.5
16.0	45.7	42.9	44.4	41.6	43.0	40.2	41.4	38.6	40.0	37.2
18.0	38.6	35.8	37.4	34.6	36.2	33.4	34.8	32.0	34.2	31.4
20.0	33.0	30.2	31.9	29.1	30.8	28.0	29.6	26.8	29.1	26.3
22.0	28.4	25.6	27.4	24.6	26.4	23.6	25.4	22.6	24.8	22.0
24.0	24.6	21.8	23.7	20.9	22.8	20.0	21.8	19.0	21.3	18.5
26.0	21.1	18.3	20.5	17.7	19.8	17.0	18.8	16.0	18.3	15.5
28.0	18.1	15.3	17.6	14.8	17.0	14.2	16.2	13.4	15.7	12.9
30.0	15.6	12.8	15.0	12.2	14.5	11.7	13.9	11.1	13.6	10.8
32.0	13.5	10.7	12.9	10.1	12.2	9.4	11.6	8.8	11.4	8.6
34.0	11.5	8.7	10.9	8.1	10.4	7.6	9.8	7.0	9.5	6.7
36.0	9.9	7.1	9.3	6.5	8.7	5.9	8.1	5.3	7.8	5.0
38.0	8.4	5.6	7.8	5.0	7.2		6.6		6.3	
40.0	7.1		6.4		5.9		5.3		5.0	
42.0			5.3		4.6					
倍率	7	6	6	6	5	5	4	4	4	4

带固定副臂时主臂工况额定起重能力表

Rated Lifting Capacity Load Chart (Boom Duty With Fixed Jib)



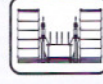
45.2m-69.2m



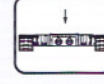
10°, 30°
18m-36



360°



88.5t



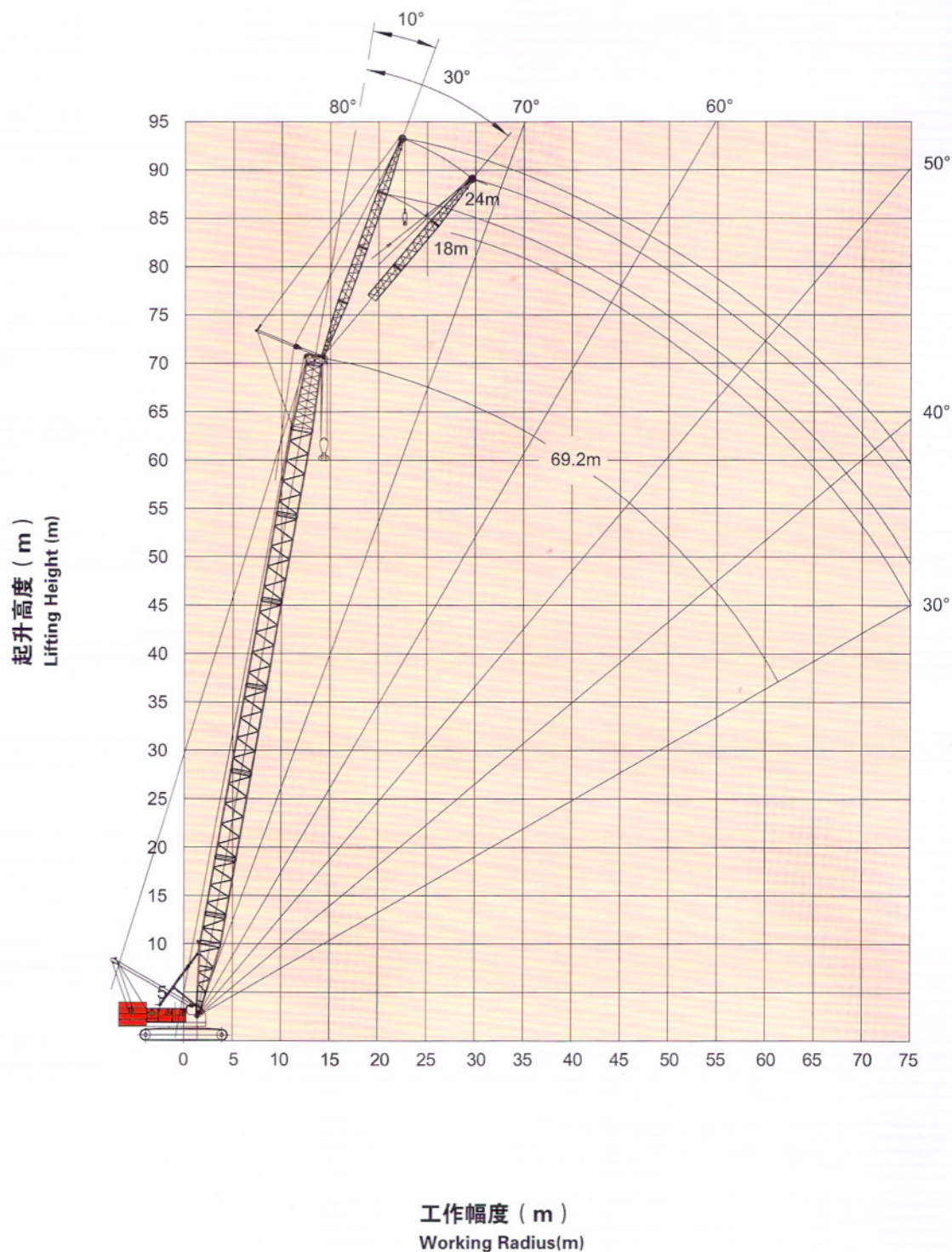
24t

固定副臂长度 Fixed jib length	36m									
	45.2		51.2		57.2		63.2		69.2	
	10°	30°	10°	30°	10°	30°	10°	30°	10°	30°
10.0	81.9	78.2	69.3/11.1	65.6/11.1						
12.0	65.7	62.0	63.0	59.3	60.3/12.1	56.6/12.1	51.4/13.2	47.7/13.2	46.8/13.7	43.1/13.7
14.0	53.0	49.3	51.0	47.3	48.8	45.1	46.7	43.0	45.6	41.9
15.0	48.1	44.4	46.2	42.5	44.3	40.6	42.5	38.8	40.5	36.8
16.0	43.9	40.2	42.6	38.9	41.2	37.5	39.6	35.9	38.2	34.5
18.0	36.8	33.1	35.6	31.9	34.4	30.7	33.0	29.3	32.4	28.7
20.0	31.2	27.5	30.1	26.4	29.0	25.3	27.8	24.1	27.3	23.6
22.0	26.6	22.9	25.6	21.9	24.6	20.9	23.6	19.9	23.0	19.3
24.0	22.8	19.1	21.9	18.2	21.0	17.3	20.0	16.3	19.5	15.8
26.0	19.3	15.6	18.7	15.0	18.0	14.3	17.0	13.3	16.5	12.8
28.0	16.3	12.6	15.8	12.1	15.2	11.5	14.4	10.7	13.9	10.2
30.0	13.8	10.1	13.2	9.5	12.7	9.0	12.1	8.4	11.8	8.1
32.0	11.7	8.0	11.1	7.4	10.4	6.7	9.8	6.1	9.6	5.9
34.0	9.7	6.0	9.1	5.4	8.6	4.9	8.0		7.7	
36.0	8.1		7.5		6.9		6.3		6.0	
38.0	6.6		6.0		5.4		4.8			
40.0	5.3		4.6							
倍率	7	6	6	5	5	5	4	4	4	4



固定副臂工况作业范围

Working Range (Fixed Jib)

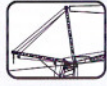


塔式工况额定起重能力表

Rated Lifting Capacity Load Chart (Luffing Jib Duty)



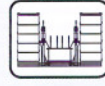
65°-85°
36.2m-60.2m



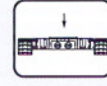
22m-61m



360°



88.5t



24t

m	36.2m																				
	22.0m			25.0m			28.0m			31.0m			34.0m			37.0m			40.0m		
	85°	75°	65°	85°	75°	65°	85°	75°	65°	85°	75°	65°	85°	75°	65°	85°	75°	65°	85°	75°	65°
14.0m	57.8																				
16.0m	53.9			52.6			51.6														
18.0m	50.7			49.3			48.3			47.1			45.9								
20.0m	47.9			46.6			45.6			44.3			43.2			40.4				36.9	
22.0m	40.9			41.3			42.1			41.9			40.8			37.6				34.3	
24.0m	35.4	36.0		35.9			36.7			36.4			36.3			35.0				31.9	
26.0m		32.6		31.6	32.3		32.4	32.4		32.2			32.0			32.0				29.7	
28.0m		29.8		28.0	29.5		28.8	29.6		28.7	29.2		28.5			28.5				27.7	
30.0m		27.3			27.1		25.9	27.2		25.8	26.8		25.6	26.5		25.7				25.6	
34.0m				21.4		23.2	21.1		23.3			23.0		21.1	22.6		21.1	22.5		21.1	22.3
38.0m							18.3			18.4	20.0	18.1		19.7		17.7	19.5			17.7	19.4
42.0m										16.2			15.9		17.3	15.5		17.2	15.4		17.0
46.0m															13.8			13.6		15.1	13.5
50.0m																		12.2			12.0
m	36.2m																				
	43.0m			46.0m			49.0m			52.0m			55.0m			58.0m			61.0m		
	85°	75°	65°	85°	75°	65°	85°	75°	65°	85°	75°	65°	85°	75°	65°	85°	75°	65°	85°	75°	65°
20.0m																					
22.0m	31.1			26.2																	
24.0m	28.9			25.2			21.9			18.3											
26.0m	26.9			24.4			21.0			17.7			14.7			13.5					
28.0m	25.0			22.6			19.4			17.2			14.3			13.3				13.5	
30.0m	23.2			21.0			18.9			16.8			14.1			13.2				13.5	
34.0m	20.1	22.1		18.1			16.3			14.3			12.7			12.1				9.5	
38.0m	17.4	19.1		15.6	18.9		13.9	17.8		12.2	15.7		10.7			10.2				8.8	
42.0m	15.0	16.8		13.5	16.6		11.9	15.3		10.3	13.4		9.0	11.9		8.6	11.3			7.3	
46.0m		14.8	13.2	11.6	14.7		10.2	13.1		8.6	11.4		7.4	10.0		7.2	9.6			5.9	8.1
50.0m		13.2	11.7		12.7	11.6		11.2	11.4	7.2	9.6		6.1	8.3		6.0	8.0			4.8	6.7
54.0m			10.5		10.3		9.6	10.2		8.1	9.9	4.9	6.9	9.1	4.9	6.7				3.7	5.4
58.0m					9.3			9.1		6.7	8.8		5.6	7.6		5.5	7.4		2.8	4.3	6.1
62.0m											7.4			6.2		4.5	6.1			3.4	4.9
66.0m															5.0			5.0		2.5	3.9
70.0m																	4.0				2.9

塔式工况额定起重能力表

Rated Lifting Capacity Load Chart (Luffing Jib Duty)



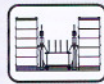
65°-85°
36.2m-60.2m



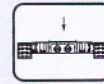
22m-61m



360°



88.5t



24t

m	42.2m																				
	22.0m			25.0m			28.0m			31.0m			34.0m			37.0m			40.0m		
	85°	75°	65°	85°	75°	65°	85°	75°	65°	85°	75°	65°	85°	75°	65°	85°	75°	65°	85°	75°	65°
14.0m	52.7																				
16.0m	48.9			47.7			46.8														
18.0m	45.7			44.4			43.4			42.2			42.0								
20.0m	42.6			41.3			40.4			39.2			38.0			37.0					36.7
22.0m	40.1			38.7			37.9			36.6			35.5			34.5					33.6
24.0m	36.7			36.6			35.7			34.5			33.3			32.4					31.5
26.0m		31.7		32.6	31.4		33.4			32.6			31.5			30.6					29.7
28.0m		28.9		28.9	28.6		29.7	28.7		29.5			29.4			28.9					28.1
30.0m		26.6			26.3		26.6	26.4		26.5	26.0		26.3			26.4					26.3
34.0m					22.5			22.6		21.6	22.3		21.6	21.9		21.6	21.7			21.6	21.6
38.0m			17.6			17.3		19.7			19.4			19.0		18.1	18.9			18.1	18.7
42.0m						15.2			15.3			14.9		16.7			16.6			15.4	16.4
46.0m											13.3			12.9		14.7	12.7			14.6	12.6
50.0m														11.5			11.4				11.2
54.0m																					10.0
m	42.2m																				
	43.0m			46.0m			49.0m			52.0m			55.0m			58.0m			61.0m		
	85°	75°	65°	85°	75°	65°	85°	75°	65°	85°	75°	65°	85°	75°	65°	85°	75°	65°	85°	75°	65°
22.0m	31.7			26.8																	
24.0m	29.3			25.7			21.2			18.7											
26.0m	27.4			24.8			20.5			18.1			15.1			13.8					
28.0m	25.5			23.1			19.8			17.6			14.7			13.6					13.5
30.0m	23.7			21.4			19.3			17.2			13.4			13.5					13.5
34.0m	20.5			18.5			16.6			14.6			13.0			12.3					9.7
38.0m	17.8	18.4		15.9	18.3		14.2	18.1		12.4			11.0			10.5					9.0
42.0m	15.3	16.2		13.7	16.0		12.2	15.8		10.5	14.3		9.2	12.7		8.8					7.5
46.0m		14.3		11.8	14.1		10.4	13.9		8.8	12.1		7.6	10.7		7.4	10.2			6.1	8.7
50.0m		12.8	10.9		12.6	10.7	8.8	11.9		7.4	10.3		6.2	8.9		6.1	8.6			4.9	7.2
54.0m			9.8		11.3	9.6		10.2	9.4		8.6	9.1	5.0	7.4		5.0	7.2			3.9	5.9
58.0m			8.8			8.6			8.4		7.2	8.2		6.1	8.0	4.0	6.0	8.2		2.9	4.8
62.0m									7.6			7.3		4.9	7.1		4.9	6.9		3.7	5.6
66.0m												6.6			5.8			5.7		2.8	4.5
70.0m																		4.6			3.5
74.0m																					2.6



塔式工况额定起重能力表

Rated Lifting Capacity Load Chart (Luffing Jib Duty)



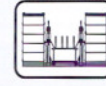
65°-85°
36.2m-60.2m



22m-61m



360°



88.5t



24t

m	45.2m																					
	22.0m			25.0m			28.0m			31.0m			34.0m			37.0m			40.0m			
	85°	75°	65°	85°	75°	65°	85°	75°	65°	85°	75°	65°	85°	75°	65°	85°	75°	65°	85°	75°	65°	
14.0m	49.9																					
16.0m	45.9			44.6			43.7															
18.0m	42.3			41.1			40.3			39.1												
20.0m	39.4			38.2			37.4			36.3			35.2			34.2						
22.0m	37.0			35.8			35.0			33.8			32.8			31.9			31.0			
24.0m	35.0			33.7			32.9			31.8			30.8			29.9			29.0			
26.0m	32.6	31.1		32.0			31.2			30.0			29.0			28.1			27.3			
28.0m		28.4		29.3	28.1		29.7			28.5			27.4			26.6			25.8			
30.0m		26.1			25.8		27.0	25.9		26.8	25.5		26.1			25.3			24.5			
34.0m					22.1			22.2		21.9	21.8		21.9	21.5		21.9	21.3		21.9			
38.0m			17.0			16.7		19.3			19.0			18.7		18.3	18.5		18.3	18.3		
42.0m						14.7			14.7		16.7	14.4		16.4			16.2		15.5	16.1		
46.0m									13.1			12.8			12.4		14.4	12.2		14.2		
50.0m															11.1			10.9		12.7	10.7	
54.0m																		9.8			9.6	
m	45.2m																					
	43.0m			46.0m			49.0m			52.0m			55.0m			58.0m			61.0m			
	85°	75°	65°	85°	75°	65°	85°	75°	65°	85°	75°	65°	85°	75°	65°	85°	75°	65°	85°	75°	65°	
22.0m	29.4																					
24.0m	27.0			24.7			21.4															
26.0m	25.3			23.6			20.7			17.3			15.3									
28.0m	23.9			23.2			20.0			16.8			14.9			13.5			13.5			
30.0m	22.7			21.6			19.5			16.4			14.6			13.5			13.5			
34.0m	20.5			18.6			16.8			14.8			13.2			11.5			10.6			
38.0m	17.9	18.0		16.1	17.9		14.4			12.6			11.1			10.6			9.1			
42.0m	15.4	15.8		13.9	15.6		12.3	15.5		10.6	14.7		9.3	13.1		8.9			7.5			
46.0m		14.0		12.0	13.8		10.5	13.7		8.9	12.5		7.7	11.0		7.5	10.5		6.2	9.0		
50.0m		12.5	10.4		12.3		8.9	12.2		7.5	10.6		6.3	9.3		6.2	8.9		5.0	7.5		
54.0m			9.3		11.0	9.1		10.5	9.0		8.9		5.1	7.7		5.1	7.5		3.9	6.2		
58.0m			8.4			8.2		8.9	8.0		7.5	7.7		6.3	7.6		4.1	6.2		3.0	5.0	
62.0m						7.4			7.2			6.9		5.1	6.7		5.1	7.1		3.9	6.0	
66.0m													6.2			6.0		4.1	6.1		3.0	4.8
70.0m															5.0			5.0			3.8	
74.0m																					2.9	

