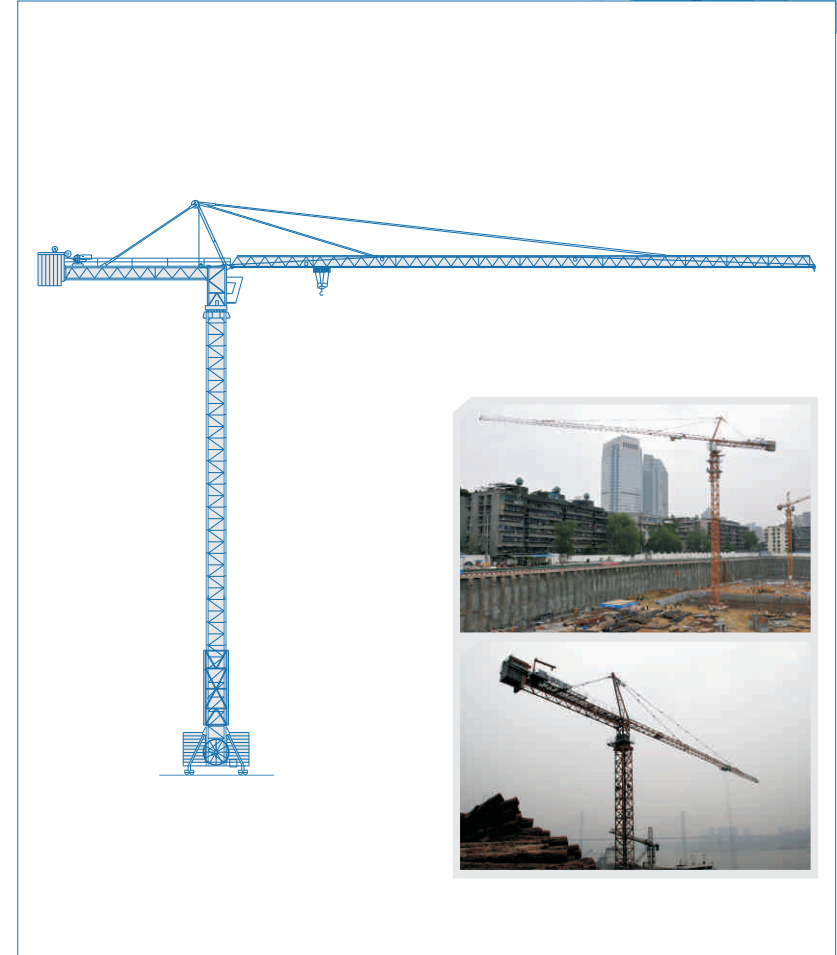


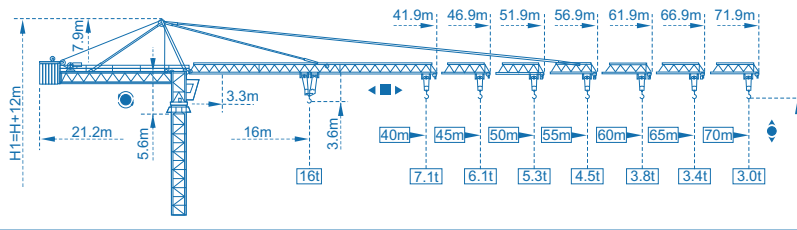
机构特性 Specifications Mechanisms

| 名称<br>Name       | 机构代号<br>Model  | 工作速度 m/min<br>Operating speeds | 起重量 t<br>Hoist weight | 绕绳量<br>Rope length | 电动机 kW<br>Motor  |                |    |
|------------------|----------------|--------------------------------|-----------------------|--------------------|------------------|----------------|----|
| 起升<br>Hoisting   | 75LVF40R<br>◆  | 双绳<br>2 fall                   | 0-30                  | 8                  | 600m<br>>600m★   | 55             |    |
|                  |                |                                | 0-60                  | 4                  |                  |                |    |
|                  |                | 四绳<br>4 fall                   | 0-15                  | 16                 |                  |                |    |
|                  |                |                                | 0-30                  | 8                  |                  |                |    |
|                  | 102LVF40F<br>◆ | 双绳<br>2 fall                   | 0-40                  | 8                  | 700m<br>>700m★   | 75             |    |
|                  |                |                                | 0-80                  | 4                  |                  |                |    |
|                  |                | 四绳<br>4 fall                   | 0-20                  | 16                 |                  |                |    |
|                  |                |                                | 0-40                  | 8                  |                  |                |    |
|                  | 120LVF40F<br>◆ | 双绳<br>2 fall                   |                       | 0-48               | 8                | 590m<br>>590m★ | 90 |
|                  |                |                                |                       | 0-96               | 4                |                |    |
|                  |                |                                |                       | 0-192              | 2                |                |    |
|                  |                | 四绳<br>4 fall                   |                       | 0-24               | 16               |                |    |
|                  |                |                                | 0-48                  | 8                  |                  |                |    |
|                  |                |                                | 0-96                  | 4                  |                  |                |    |
| 70RCS40<br>◆     | 双绳<br>2 fall   |                                | 0-30                  | 8                  | 600m<br>>600m★   | 51.5           |    |
|                  |                |                                | 0-60                  | 4                  |                  |                |    |
|                  | 四绳<br>4 fall   |                                | 0-15                  | 16                 |                  |                |    |
|                  |                |                                | 0-30                  | 8                  |                  |                |    |
| 变幅<br>Trolleying | XD120K<br>◆    |                                | 0-40                  |                    | 堵转力矩<br>120N.m   |                |    |
|                  | 7DCV<br>◆      |                                | 0-43                  |                    | 5.5              |                |    |
|                  | 8DVF<br>◆      |                                | 0-44                  |                    | 堵转力矩<br>120N.m   |                |    |
| 回转<br>Slewing    | RCV185E<br>●   |                                | 0-0.7 r/min           |                    | 堵转力矩<br>2×185N.m |                |    |
|                  | 24RVF<br>●     |                                | 0-0.7 r/min           |                    | 2×9              |                |    |
|                  | RCV185D<br>●   |                                | 0-0.7 r/min           |                    | 堵转力矩<br>3×185N.m |                |    |
|                  | 37RVF<br>●     |                                | 0-0.7 r/min           |                    | 3×9              |                |    |
| 行走<br>Travelling | RT443<br>◆     |                                | 0-12.5-25             |                    | 4×1.7/3.4        |                |    |
|                  | 18TVF<br>◆     |                                | 0-25                  |                    | 4×3.4            |                |    |

★ 根据用户特殊要求提供  
To be supplied according to client's specific requirements

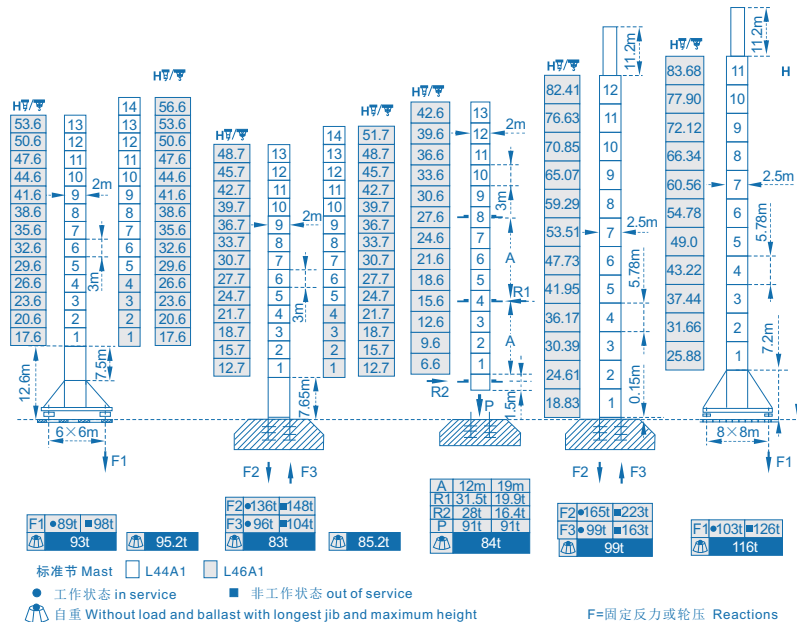


## 外形尺寸 Outline Dimensions



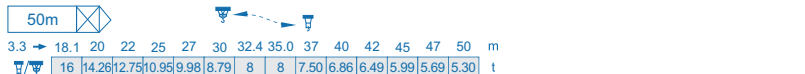
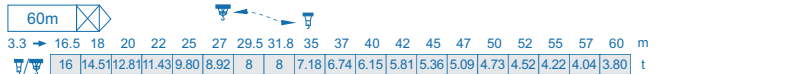
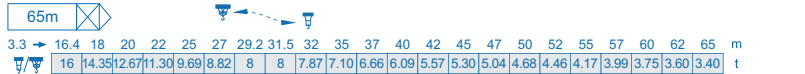
## 塔身截面 Mast $\varnothing 2m \times 2m$

## $\varnothing 2.5m \times 2.5m$



## 载荷特性 Load diagrams

### 臂 Jib



标准小车可使用2/4倍率绳。(使用四倍率绳时,应从二倍率的载荷中减去0.73吨)。Standard trolley 2/4 fall (when using  $\frac{1}{4}$  subtract 0.73t from the loads  $\frac{1}{4}$ ).

## 产品介绍 Products Introduction

SCM-C7030塔式起重机,是我公司自行设计上回转,自升塔式起重机,最大起重重16t。各种机构采用本公司先进技术,性能优越,构造合理,就位准确。

该机具有轨道行走式,固定附着式,内爬式三种使用类型。

SCM-C7030 tower crane is a kind of self-telescoping crane slewing from the top which is designed and manufactured by SCM. The maximum hoisting capacity is 16t. All the mechanisms of the C7030 adopted advanced technology with reasonable structures, superior performance and exact positioning.

SCM-C7030 can be rail-travelling, stationary (or anchorage type) and inner-climbing type.