

# ZOOMLION® QY70V

ZLJ5450JQZ70V

## All Hydraulic Truck Crane performance specification

- Superstructure electro-hydraulic proportion control has adopted PLC program control and CAN bus-connecting, thus can realize fault self-diagnose.
- By means of two sections outrigger beam, span is large and stability is excellent.
- Compared with the common engine, Steyr energy saving engine with large power can help to save ten percent of energy while vehicle is running in middle/lower speed.
- The Shanxi Fuller gear-box (with slope shift) can ensure excellent performance and stable & reliable transmission.
- The durable wire Ziwu tyre is adaptive for any evil travelling conditions with heavy-loaded.

ZOOMLION

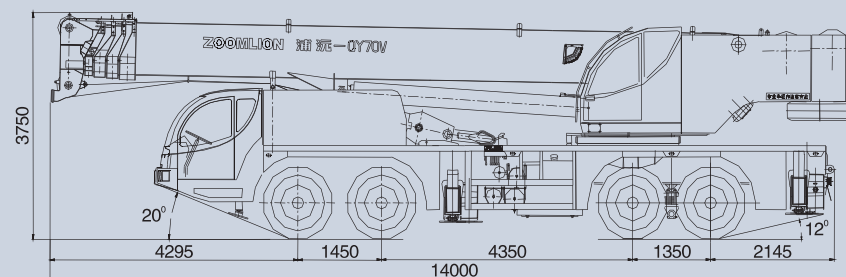
We reserve the right to change design and specifications without notice

Table of Main Technical Performance and Specification

Working performance specification	Max. rated lifting capacity	Kg	70000
	Max. lifting moment with basic boom length	kN.m	2352
	Max. lifting moment with max. boom length	kN.m	1098
	Basic boom max. lifting height	m	12.2
	Boom max. lifting height	m	44.2
Working speed	Jib max. lifting height	m	60.2
	Single line max. speed (main winch)	m/min	120
	Single line max. speed (auxiliary winch)	m/min	68
	Lifting boom elevating time	s	57
	Lifting boom extending time	s	107
Traveling specification	Slewing speed	r/min	1.6
	Max. traveling speed	km/h	75
	Max. gradeability	%	30
	Min. turning radius	m	12
	Min. clearance	mm	260
Mass specification	Exhaust displacement	FSN	≤2.5
	Oil consumption/per 100 kilometers	L	58
	Self-weight in traveling condition (gross)	kg	45000
	Complete vehicle kerb mass	kg	44870
Dimension specification	Rear axle load	kg	19000
	Tandem & rear axle load	kg	26000
	Overall dimensions(L x W x H)	mm	14000x2750x3750
	Outrigger longitudinal span	m	6.00
	Outrigger transversal span	m	7.60
	Boom length	m	11.6~44.0
	Boom angle	°	-2~80
Chassis	Jib length	m	9.5~16
	Jib offset	°	0, 30
	Type		ZLJ5451
	Engine Type		WD615.46
	Rated power	kw/rpm	266/2200
	Rated output torque power	N.m/rpm	1460/1300 ~ 1600
	Manufacturer		Puyuan company, Zoomlion
	Hydraulic oil brand		L-HV32

### More choices which can satisfy more requirements

- The optional GPS locating system which can not only confirm the vehicle's location via satellite, but also long-distance and real-time monitor the equipments' operation condition and parameter, so when fault occurs, the solution can be provided.
- The Cummins NTC-350 engine is available as option.
- The interphone which can realize the convenient contact between operator and commanders is available as option.



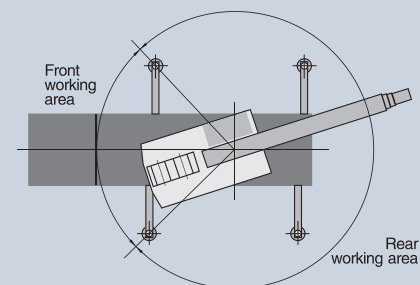
We reserve the right to change design and specifications without notice

### Rated Lifting Capacity Table

Unit: kg

working radius (m)	Boom							boom angle (°)	boom + jib			
	outrigger fully extended, side & rear working area								44.0m+9.5m		44.0m+16.0m	
	11.6m	15.6m	19.6m	25.7m	31.8m	37.9m	44.0m		jib offset		jib offset	
3.0	70000	50000	40000						0°	30°	0°	30°
3.5	63000	50000	40000	28000				80	5000	3000	3000	1300
4.0	56000	47000	40000	28000				78	4700	2850	2700	1200
4.5	52000	44000	40000	28000	18000			76	4400	2600	2400	1150
5.0	48000	42000	38000	27000	18000			74	4100	2450	2100	1100
5.5	43000	39000	36000	26000	18000			72	3800	2300	1850	1050
6.0	39000	37000	34000	25000	18000	14000		70	3500	2200	1700	1000
6.5	35000	33000	31500	24000	18000	14000		68	3200	2100	1600	970
7.0	30000	28700	28700	23000	18000	14000	10000	66	2800	2000	1500	940
7.5	26500	25000	25000	22000	18000	14000	10000	64	2400	1900	1400	910
8.0	23500	22500	22500	21000	17500	14000	10000	62	2100	1800	1300	880
9.0	18500	18200	18200	18500	16000	14000	10000	60	1850	1650	1200	850
10.0		14700	14700	15300	14500	13000	9800	58	1600	1350	1100	800
11.0		12200	12200	12700	13000	12000	9500	56	1300	1150	1000	750
12.0		10200	10200	11000	11500	11000	9000	54	1000	900	800	
14.0			7100	8200	8800	9300	8000	52	800			
16.0			5300	6000	6700	7200	7000					
18.0				4700	5200	5500	5900					
20.0				3500	4000	4300	4600					
22.0					3100	3300	3800					
24.0					2300	2500	3000					
26.0					1700	1190	2300					
28.0						1400	1800					
30.0						900	1400					
32.0							1000					
Fall	12	9	9	5	5	3	3	Fall				1

- Note:**
- Above working condition is all with outrigger fully extended, never lift a load on the wheels.
  - Capacities above the thick line in the table are based on the structure strength of the crane, the others, on stability of the complete machine.
  - Set up the 5° outrigger, the values in the table are suitable for 360° operation.
  - The values in the table are the Max. permissible values and include weight of the hook. (The main hook is 550kg, the auxiliary hook, 140kg.)
  - A working radius given in the table is a horizontal distance from the centerline of the hook to the axis of the slewing ring when the hook is loaded.
  - When actual boom length and working radius are between two values, determine lifting capacity according to bigger boom and radius.
  - Rated lifting capacity should exclude the weight of dings and self-weight of jib (2000kg), when boom is used with jib extended.



Set up the 5° outrigger, it is suitable for 360° operation.

