



Daniel Smith Industries Ltd
 315 Flaxton Road, Rangiora, 7400
 Canterbury, New Zealand.
 Phone: 0064 (0) 3 313 9902
 Fax: 0064 (0) 3 313 9904
 Mobile: 0064 (0) 21 33 66 23
 Email: daniel@danielsmith.co.nz

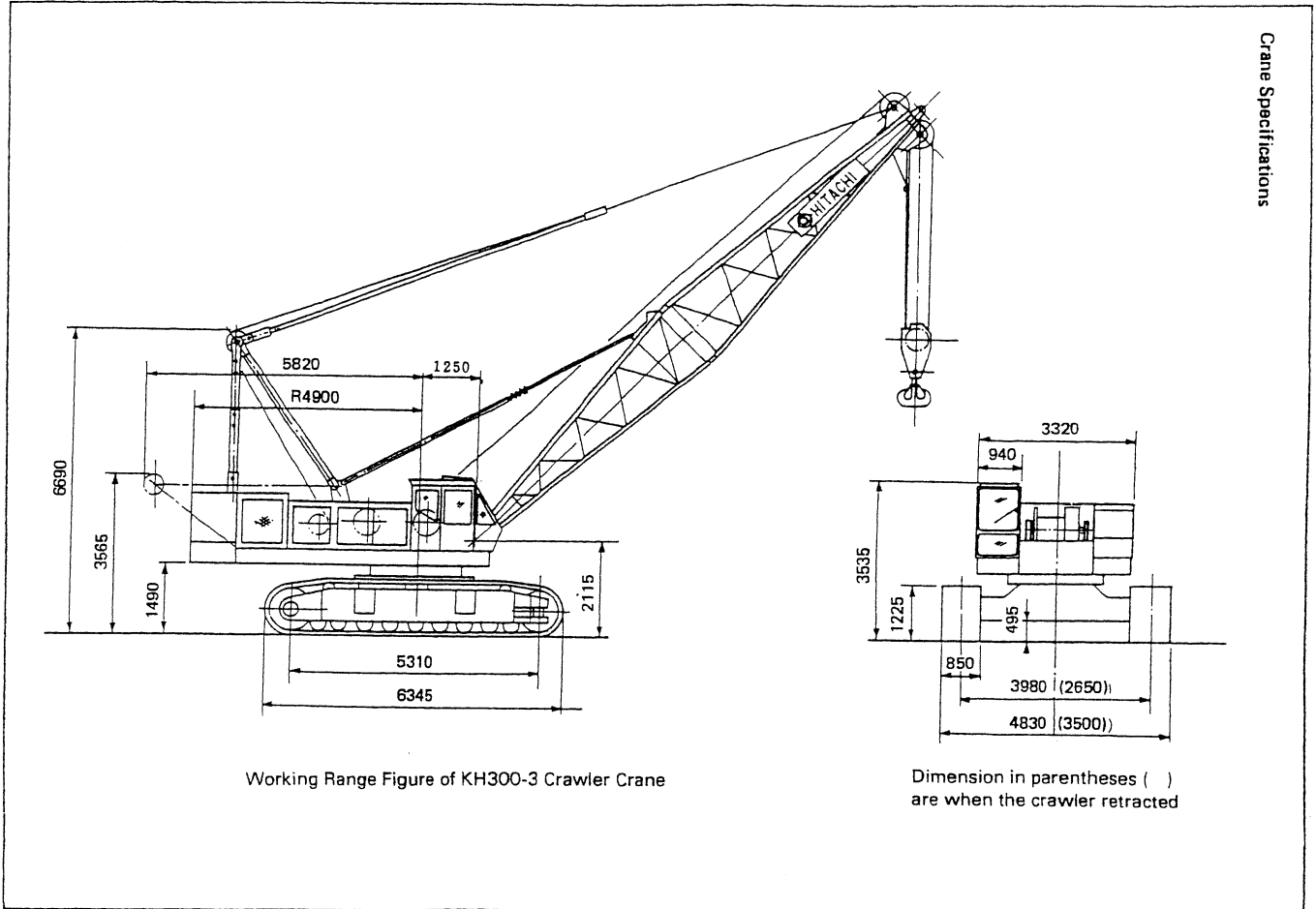
HITACHI

KH 300-3 80 Ton Crawler

Page 1 of 5

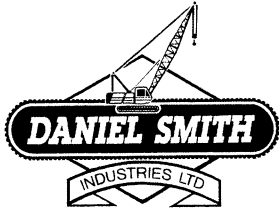
Dimensions

Unit: mm



Specifications

Maximum rated load	metric ton x m	80 ton at 4.00m
Boom	Basic boom length	m 13.0
	Maximum boom length	m 58.0
	Jib length	m 9.0 – 18.0
	Maximum boom with jib length	m 49.0 + 18.0
Swing Speed	High	0 to 3 min-1
	Low	0 to 1.9 min-1
Gradeability		17 degrees (30%)
Ground pressure	kPa(kgf/cm ²)	0.75 bar (0.75 kgf/cm ² , 10.7 psi)
Operating weight	metric ton	73.50 metric ton (Equipped with basic boom, 80 ton capacity hook and 20,80 ton counterweights)

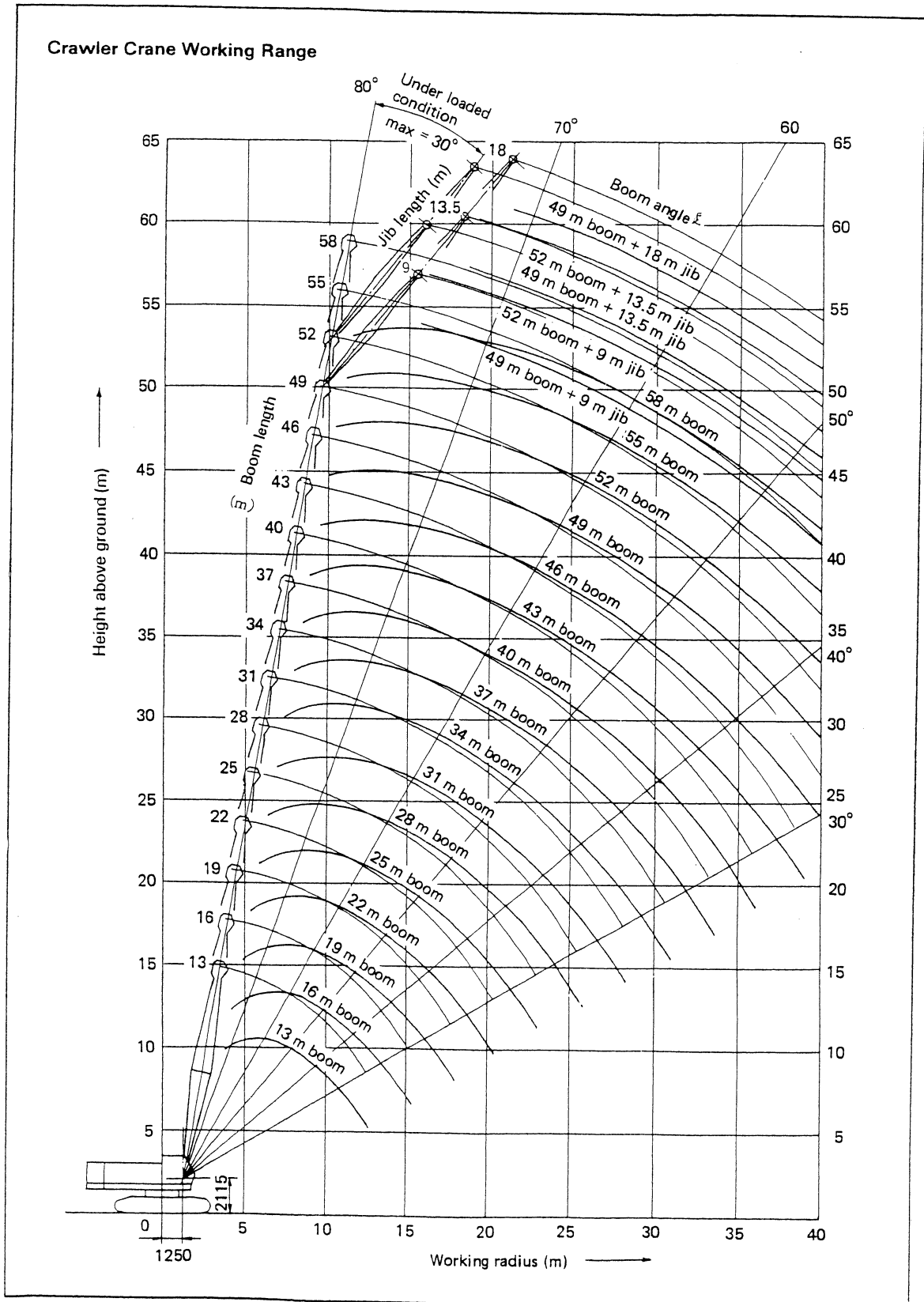


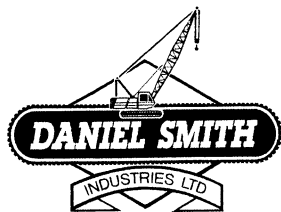
Daniel Smith Industries Ltd
 315 Flaxton Road, Rangiora, 7400
 Canterbury, New Zealand.
 Phone: 0064 (0) 3 313 9902
 Fax: 0064 (0) 3 313 9904
 Mobile: 0064 (0) 21 33 66 23
 Email: daniel@danielsmith.co.nz

HITACHI

KH 300-3 80 Ton Crawler

Working Ranges





Daniel Smith Industries Ltd
 315 Flaxton Road, Rangiora, 7400
 Canterbury, New Zealand.
 Phone: 0064 (0) 3 313 9902
 Fax: 0064 (0) 3 313 9904
 Mobile: 0064 (0) 21 33 66 23
 Email: daniel@danielsmith.co.nz

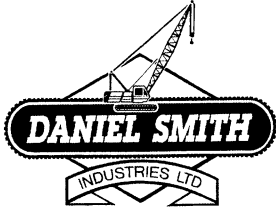
HITACHI

KH 300-3 80 Ton Crawler

Crane Ratings

- Standard counterweight of 20.75 ton.

Working radius (m)	Boom length (m)															
	13	16	19	22	25	28	31	34	37	40	43	46	49	52	55	58
3.9	80.00															
4.0	80.00	4.4mx 72.70														
4.5	71.10	70.95	4.9mx 60.90													
5.0	59.00	58.80	58.70	5.4mx 51.25												
5.5	50.35	50.15	50.05	50.00	5.9mx 44.10											
6.0	43.85	43.65	43.55	43.45	43.35											
6.5	38.80	38.60	38.50	38.40	38.30	38.25										
7.0	34.75	34.60	34.45	34.35	34.25	34.20	34.10	7.5mx 30.65								
8.0	28.70	28.50	28.35	28.30	28.20	28.15	28.00	27.85	27.70	8.5mx 25.20						
9.0	24.40	24.20	24.05	23.95	23.85	23.80	23.70	23.50	23.50	23.35	9.1mx 22.95	9.6mx 21.05				
10.0	21.20	20.95	20.80	20.70	20.60	20.55	20.40	20.25	20.20	20.10	19.95	19.80	10.1mx 19.50	10.6mx 18.00	11.1mx 16.65	11.7mx 15.45
12.0	16.65	16.45	16.25	16.20	16.05	16.00	15.85	15.70	15.65	15.50	15.35	15.25	15.20	15.05	14.95	14.80
14.0	12.7mx 15.55	13.45	13.25	13.15	13.00	12.95	12.85	12.65	12.60	12.50	12.30	12.20	12.15	12.00	11.90	11.75
16.0		15.3mx 12.00	11.10	11.00	10.85	10.80	10.65	10.50	10.45	10.30	10.15	10.00	9.95	9.85	9.70	9.55
18.0			17.9mx 9.65	9.40	9.25	9.15	9.05	8.90	8.80	8.70	8.50	8.40	8.35	8.20	8.10	7.95
20.0				8.20	8.00	7.90	7.80	7.60	7.55	7.40	7.25	7.10	7.05	6.95	6.80	6.65
22.0				20.5mx 7.95	7.05	6.90	6.80	6.60	6.55	6.40	6.25	6.10	6.05	5.90	5.80	5.65
24.0					23.1mx 6.60	6.10	6.00	5.80	5.75	5.60	5.40	5.30	5.20	5.10	4.95	4.80
26.0						25.7mx 5.55	5.30	5.15	5.05	4.90	4.75	4.60	4.55	4.40	4.25	4.10
28.0							4.75	4.55	4.45	4.35	4.15	4.05	3.95	3.80	3.65	3.45
30.0							28.3mx 4.70	4.10	4.00	3.85	3.65	3.50	3.40	3.25	3.10	2.90
32.0								30.9mx 3.90	3.55	3.40	3.20	3.05	2.95	2.75	2.60	2.40
34.0									33.5mx 3.30	3.05	2.80	2.65	2.50	2.35	2.20	2.00
36.0										2.70	2.45	2.30	2.15	2.00	1.80	1.60
38.0										36.1mx 2.65	2.15	1.95	1.85	1.65	1.50	1.30
40.0											38.7mx 2.05	1.70	1.55	1.35	1.20	



Daniel Smith Industries Ltd
 315 Flaxton Road, Rangiora, 7400
 Canterbury, New Zealand.
 Phone: 0064 (0) 3 313 9902
 Fax: 0064 (0) 3 313 9904
 Mobile: 0064 (0) 21 33 66 23
 Email: daniel@danielsmith.co.nz

HITACHI

KH 300-3 80 Ton Crawler

Page 4 of 5

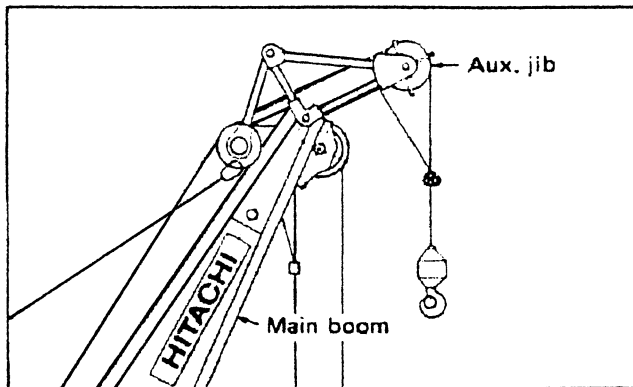
Crane Ratings for Fly Jib

- The rated load for jib is equal to that of the main boom at the same working radius, but should not exceed maximum jib ratings shown.
- The jib offset to the main boom is under loaded condition.
- The maximum working radius of the jib do not exceed that of the main boom used.

Maximum Fly jib rating.

Jib length		9.0m	13.5m	18.0m
	Jib offset angle			
Maximum rated load	10 degrees	10 000 kg	10 000 kg	5 950 kg
Maximum rated load	30 degrees	9 300 kg	5 700 kg	3 950 kg

Auxiliary Jib



Auxiliary jib rating

- Rated load for the Auxiliary jib hook is equal to that of main hook at the same working radius,
- but do not exceed maximum rated load 10 000 kg



Daniel Smith Industries Ltd
 315 Flaxton Road, Rangiora, 7400
 Canterbury, New Zealand.
 Phone: 0064 (0) 3 313 9902
 Fax: 0064 (0) 3 313 9904
 Mobile: 0064 (0) 21 33 66 23
 Email: daniel@danielsmith.co.nz

HITACHI

KH 300-3 80 Ton Crawler

Transportation

- **Approximate weights and dimensions of main components after being disassembled for transportation.**

	Part name	Weight	Length	Width	Height	Remarks	
Basic machine	Basic machine	50500	13750	*3500	3570	With lower boom, except counterweight	
		49000	8990	*3500	3570	Except lower boom and counterweight	
		30000	7815	3320	3070	Except lower boom, counterweight and crawler	
		Crawler (right)	9500	6345	1545	1225	
		Crawler (left)	9500	6345	1545	1225	
		Counterweight (1)	9830	3260	1000	670	
		Counterweight (2)	4000	1200	800	1075	
		Counterweight (3)	3460	800	1000	1155	
		Counterweight (4)	3460	860	1000	1155	
	Crane front	Lower boom	990	6680	1800	1700	With boom joint and boom foot
Upper boom		1610	7000	1610	1720	With pendant rope	
Back stop		170	4000	150	150		
Bridle		350	1620	710	210		
3m extension boom		480	3130	1640	1720	} With pendant rope, pin and guide roller	
6m extension boom		740	6130	1640	1720		
9m extension boom		1070	9130	1640	1720		
Jib upper		270	4930	610	680	Except rope guide (Part No. 8003116)	
Jib upper		175	4620	815	600	With boom joint and jib foot	
Jib extension		125	4590	610	600	Except pendant rope	
Jib mast		375	4400	620	620		
Aux. jib		350	1620	710	210		
80 t hook		970	1975	730	450		
40 t hook		620	1760	730	360		
25 t hook	730	1740	740	320			
10 t hook	370	1025	445	445			

*When the beam (Part No. 7016004) on the end of track frame is not removed, the width is 4150 mm. Crawler is retracted.